



**PENCH TIGER RESERVE,  
MAHARASHTRA**

# **M-STripES**

**Implementation  
Annual Report**

**April 2023 To March 2024**

# **M-STripES Implementation Annual Report April 2023 to March 2024**

© 2024 Pench Tiger Reserve Foundation, Maharashtra.

**Edited by:** Dr. Prabhu Nath Shukla (IFS)

**Designed by:** Ashwini Thorait

**All Rights Reserved.**

No part of this publication may be reproduced, stored in a retrieval system, or transmitted in any form or by any means electronic, mechanical, analog/digital, photocopying, recording, or otherwise, without the prior permission in writing from the publisher and copyright holder.

**First Published in 2024 By Pench Tiger Reserve Conservation Foundation.**

**E-mail: [edpenchfoundation@mahaforest.gov.in](mailto:edpenchfoundation@mahaforest.gov.in)**

## **PREFACE**

The Pench Tiger Reserve, a jewel of India's wilderness, has always been at the forefront of wildlife conservation. Among the most impactful of these initiatives is the implementation of M-STripES (Monitoring System for Tigers - Intensive Protection and Ecological Status), a groundbreaking monitoring system that has revolutionized the way we monitor and protect our precious wildlife. This report analyzes the data of M-STripES during 2023-24.

The present report consist of division and range level patrolling data. Besides, it has data of patrolling being done at various administrative level as recorded by M-STripES. Furthermore, maps created using the patrolling data helps in understanding graphs in patrolling. The map created using data entered in ecological module has enhanced our understanding of the distribution of various animal across the Tiger Reserve and need of our conservation efforts across the reserve. I am confident that present report will help in better monitoring of staff patrolling and will enhance protection region of Pench, Maharashtra.

**Dr. Prabhu Nath Shukla (IFS)**  
**Deputy Director, Pench Tiger Reserve,**  
**Nagpur (Maharashtra)**

# Contents

<b>1. Introduction</b>	<b>01</b>
<b>2. M-STripES Patrolling Data Analysis</b>	<b>05</b>
<b>3. M-STripES Ecological Data Analysis</b>	<b>22</b>
<b>4. Letter Issued Regarding M-STripES Patrolling</b>	<b>44</b>

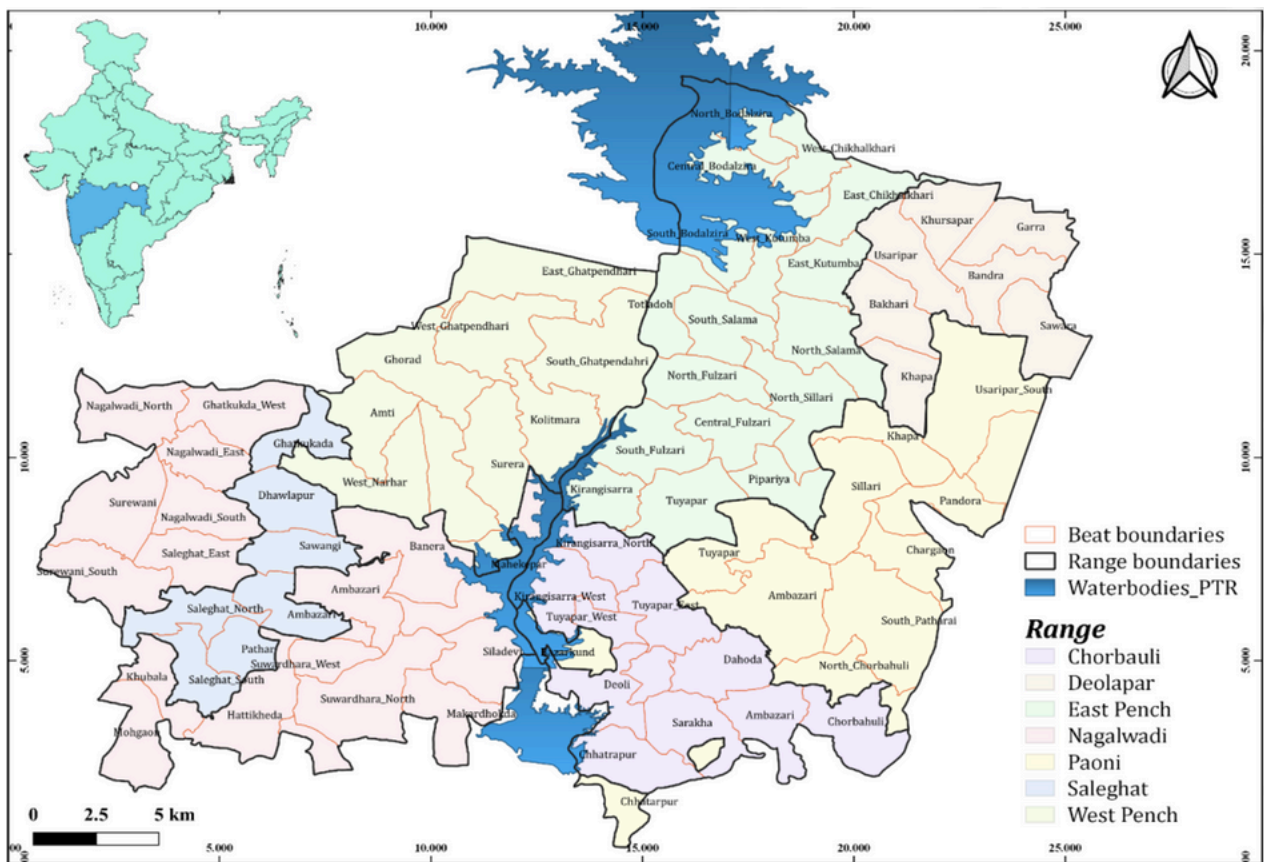
# Introduction

## **A Brief Story About The Pench Tiger Reserve, Maharashtra**

Pench Tiger Reserve situated in the northern part of eastern Vidarbha is spread in Ramtek, Parseoni and Saoner tehsil of Nagpur district. It is the 25th tiger reserve of India. The Pench Tiger Reserve (PTR) which derives its name from its lifeline - the River Pench is spread over 741.41 Sq.km of area. It consists of a core area (439.84 sq km) of 5 ranges: East Pench, West Pench, Deolapar, Chorbahuli and Saleghat; and a buffer area of (205.03 sq km) comprising 2 ranges: Paoni and Nagalwadi.

MSTripES implementation in Pench, Maharashtra done during last few years has been given in following table.

Sr. No.	Year	Total Patrolling (in Kms)	Patrolling intensity in km /sq km area (Total Patrolling /Total area of Pench)
1	2016-17	131352	177.17
2	2017-18	178425	240.66
3	2018-19	188182	253.82
4	2019-20	154277	208.09
5	2020-21	176914	238.62
6	2021-22	201817	272.21
7	2022-23	207409	279.75
8	2023-24	210039	283.30



**Location Map of Pench Tiger Reserve, Maharashtra**

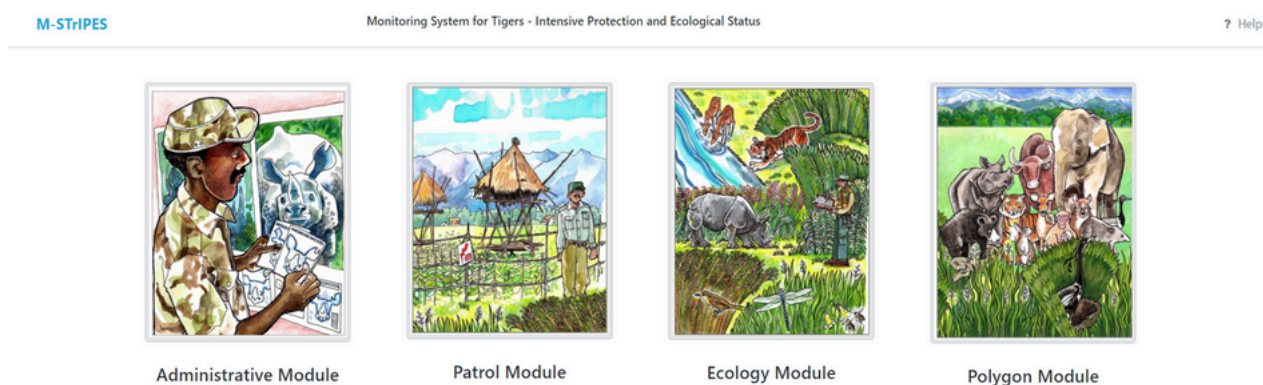
# Introduction of M-STripES

The “M-STripES” has been designed to address this void. It is a platform where modern technology is used to assist effective patrolling, assess ecological status and mitigate human-wildlife conflict in and around tiger reserves.

The M-STripES program uses Global Positioning System (GPS), General Packet Radio Services (GPRS), and remote sensing, to collect information from the field, create a database using modern Information Technology (IT) based tools, analyses the information using GIS and statistical tools to provide inferences that allow tiger reserve managers to manage their wildlife resources better. Different modules present in the system are -

## a. Patrol Module

The patrol module maintains a spatial database of patrol track logs, crime scenes with geotagged photographs and important observations made by field staff while on different types of patrol duties. The phone app allows visualization of all patrols in real time across the country when in cellular network connectivity. It also permits the guard to send geotagged location data to specified phone numbers in case of emergency (SOS) function. The mobile app can continue to operate in areas without a phone network by using the phone’s inbuilt GPS and preloaded base maps.



## b. Ecological Module

The tiger reserves of India use a set of standardized protocols for ecological monitoring by field staff which include the following components:

- 1) Occupancy of carnivores and large ungulates,
- 2) Abundance estimation of ungulates,
- 3) Assessment of anthropogenic impacts and
- 4) Habitat assessment.

The ecological monitoring comprising of the above components are implemented across the country at a spatial resolution of 20 square km every four years and twice

annually within all tiger reserves and these standardized protocols are now part of the **'Ecological Module'** of the M-STrIPES program.

### **c. Conflict Module**

The conflict module of M-STrIPES addresses data recording, achieving, geotagging, and spatial analysis of human-wildlife conflict details. The app has provision for recording the details of attacks on humans, attacks on livestock, crop damage and property damage. This information on location, with spatially referenced photo evidence, and the extent of conflict allows wildlife managers to mitigate conflict with appropriate interventions.

The M-STrIPES app is a mobile-based application used for monitoring patrolling and collecting wildlife data through its ecological module. Its significance in tiger conservation is:

1. Real-time monitoring: Allows forest officials to record and submit patrolling, tiger and other animal sightings, mortalities, and other relevant data in real-time.
2. Spatial tracking: Uses GPS mapping for encountered sightings.
3. Intelligent database: Analyzes data to provide insights on tiger behavior, habitat use, and population trends.
4. Conservation efforts: Informs and optimizes conservation strategies, such as habitat protection and human-tiger conflict mitigation.
5. Data-driven decision-making: Enables data-driven decision-making for tiger conservation and management.

M-STrIPES was started in Pench Tiger Reserve since May 2016.



# M-STRIPES Patrolling Data Analysis

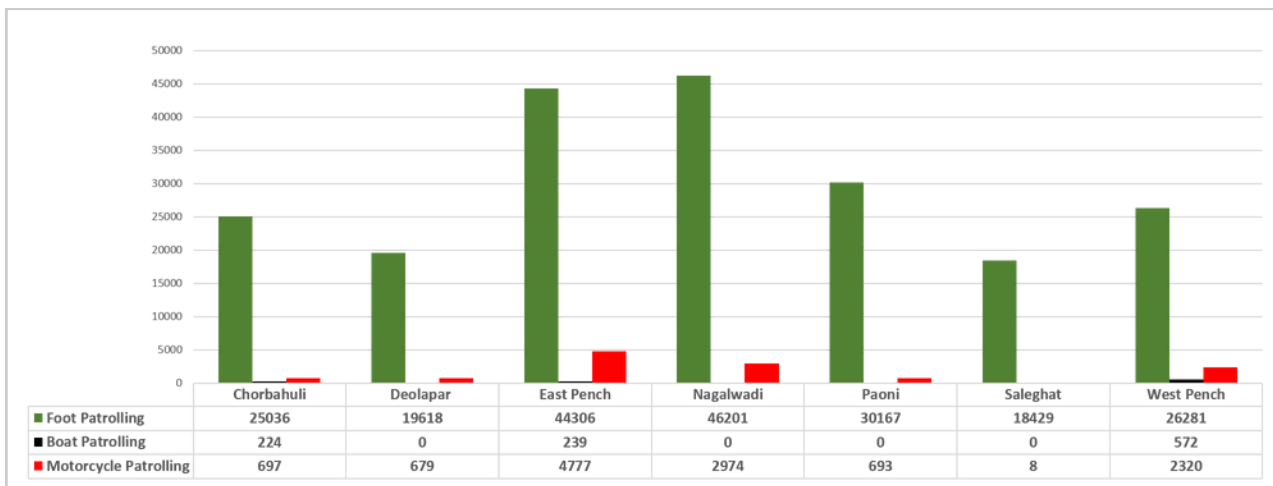
## Range Wise Patrol Efforts – 223221 kms. (April 2023 to March 2024)

Pench, MH	Chorbahuli	Deolapar	East Pench	Naglwadi	Paoni	Saleghat	West Pench	Total
Foot Patrolling	25036	19618	44306	46201	30167	18429	26281	210038
Boat Patrolling	224	0	239	0	0	0	572	1035
Motorcycle Patrolling	697	679	4777	2974	693	8	2320	12148
<b>Total Patrolling</b>	<b>25957</b>	<b>20297</b>	<b>49322</b>	<b>49175</b>	<b>30860</b>	<b>18437</b>	<b>29173</b>	<b>223221</b>

**Total Patrolling Efforts : 223221**

**Range with Highest Patrolling : East Pench - 49322**

**Range with Lowest Patrolling : Saleghat - 18437**

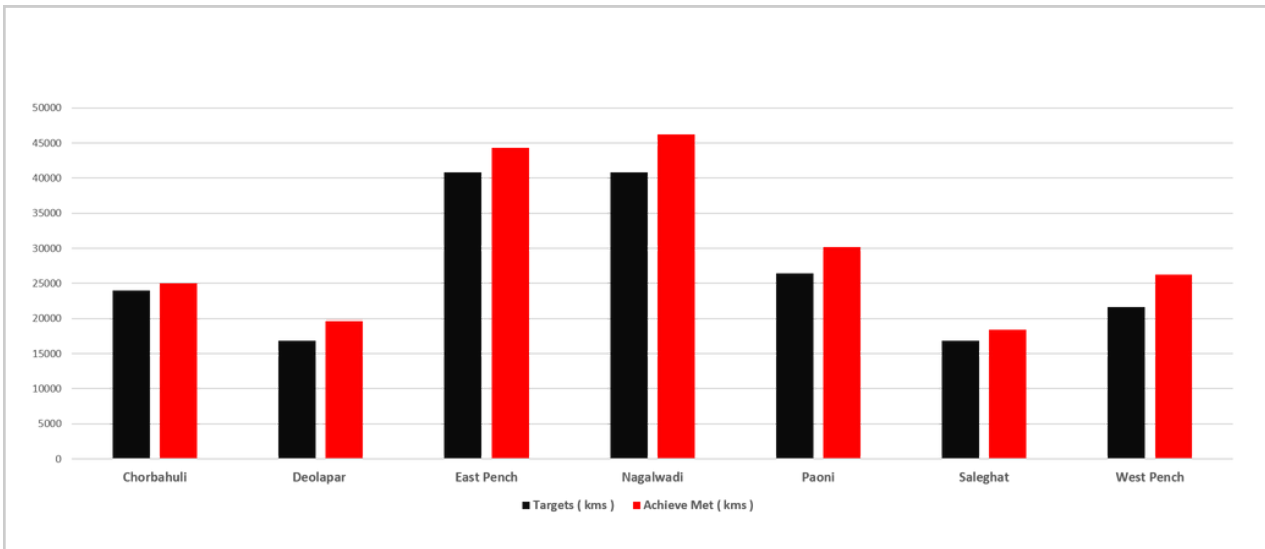


# Achieve Met Foot Patrol of 112% (April 2023 To March 2024)



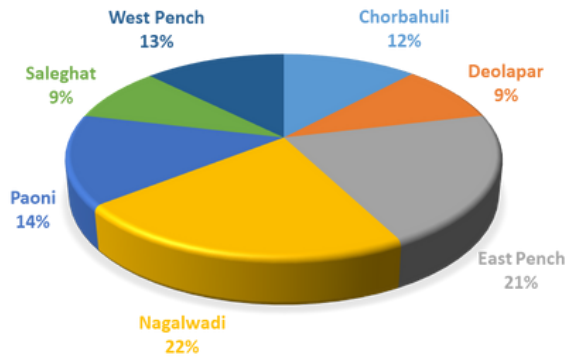
Pench, Maharashtra								
Range	Chorbahuli	Deolapar	East Pench	Naglwadi	Paoni	Saleghat	West Pench	Total
Targets (kms)	24000	16800	40800	40800	26400	16800	21600	187200
Achieve Met (kms)	25036	19618	44306	46201	30167	18439	26281	210048
Achieve Met (kms)	104%	117%	109%	113%	114%	110%	122%	112%

**Total Achieve Met Foot Patrol : 112%**  
**Range with Highest Achieve Met Foot Patrol : Deolapar - 117%**  
**Range with Lowest Achieve Met Foot Patrol : Chorbahuli - 104%**

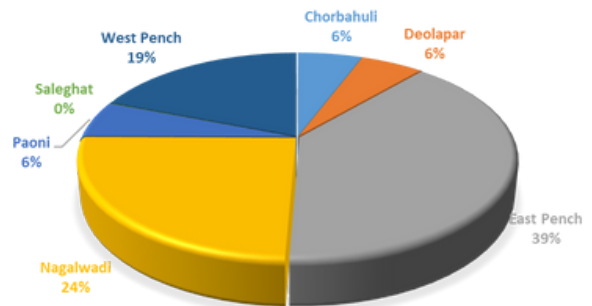


# Rangewise Distribution of Patrol Efforts–223221 kms. (April 2023 & March 2024)

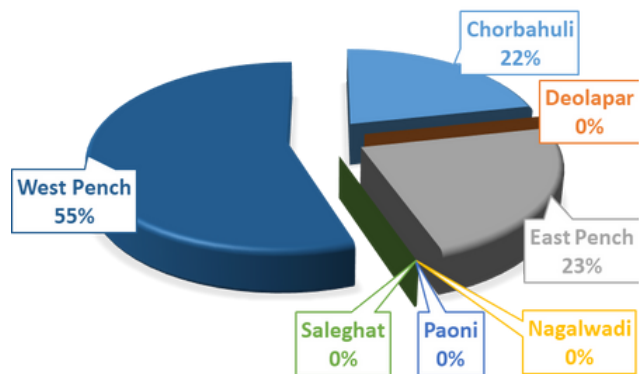
## Foot Patrolling



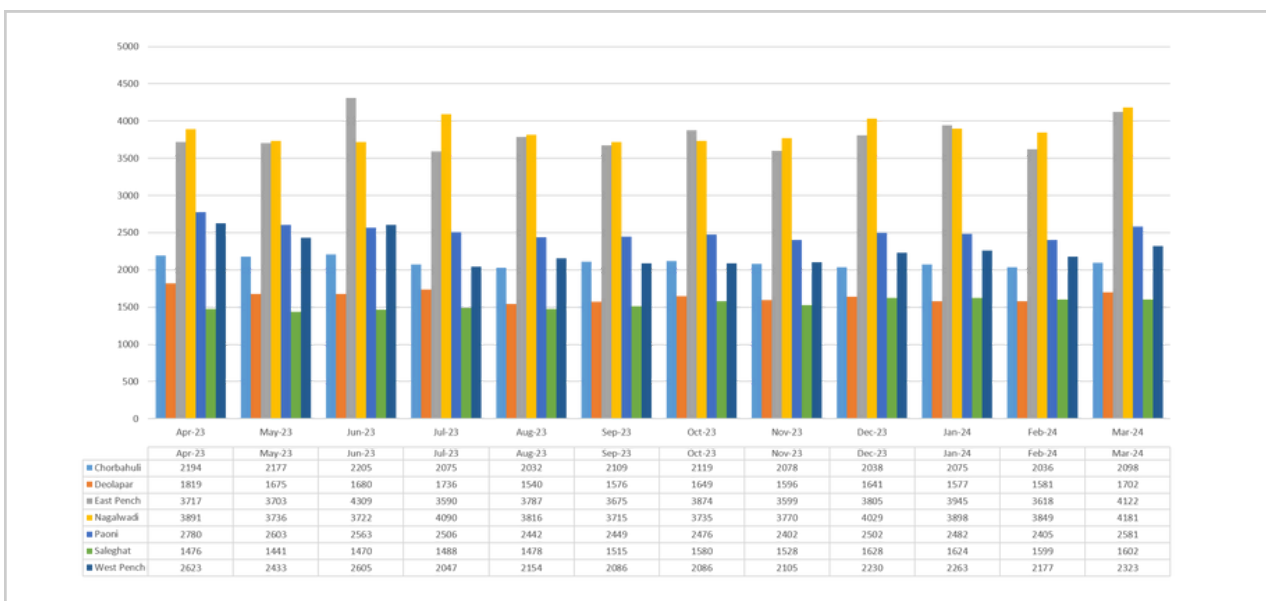
## Motorcycle Patrolling



## Boat Patrolling

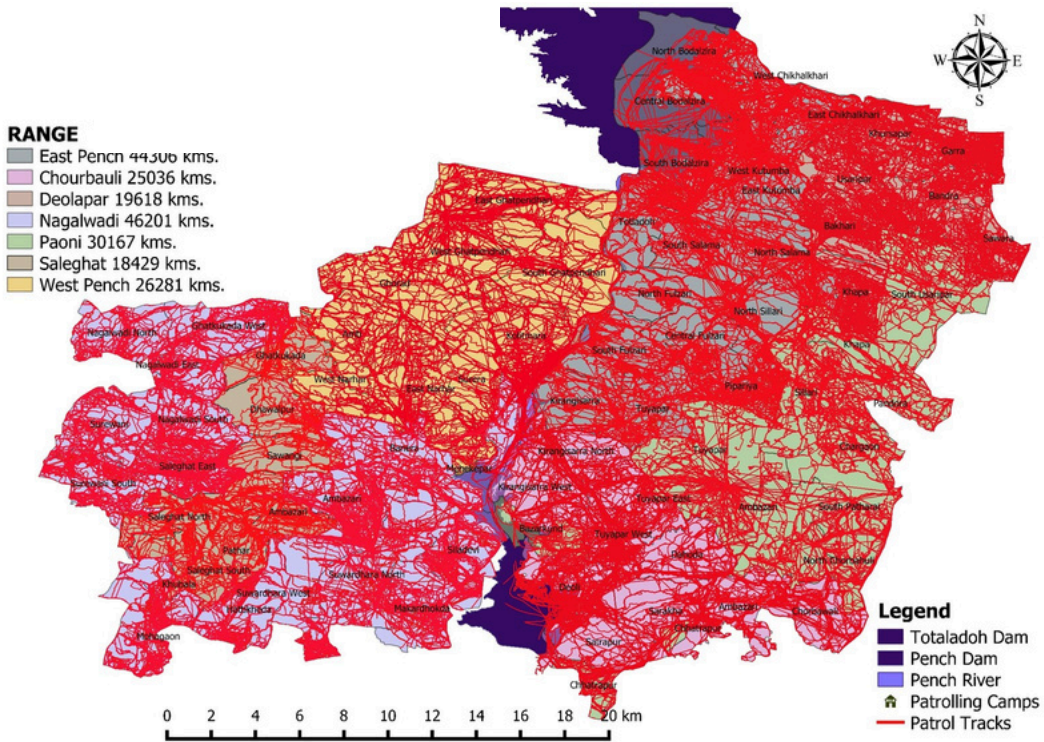


## Month & Range Wise Patrol Efforts

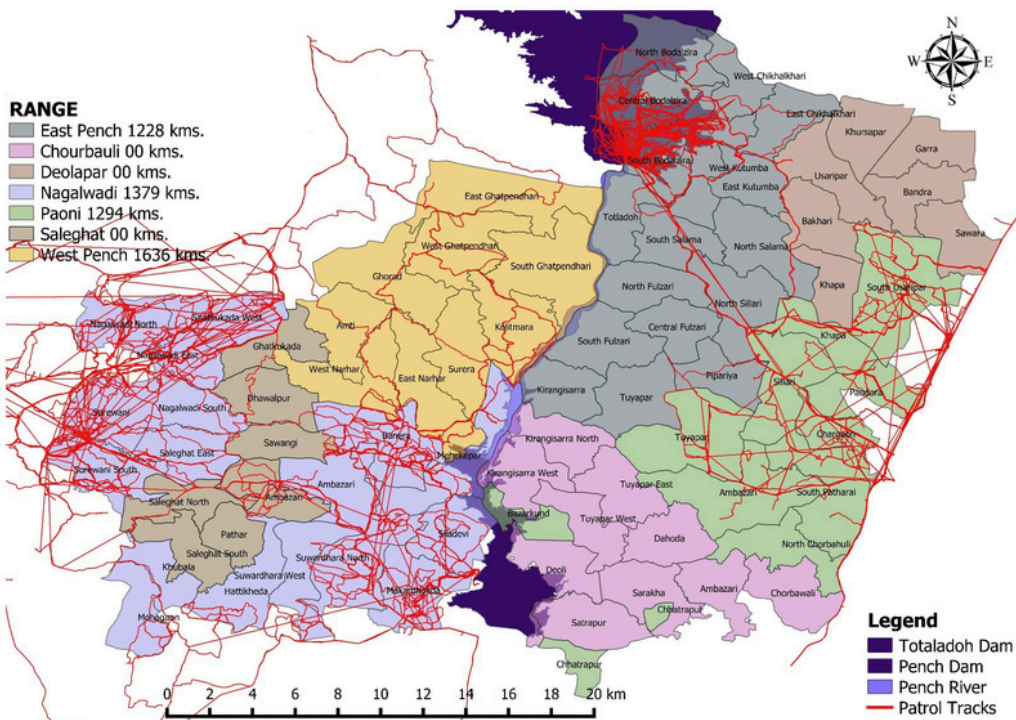




## Pench Tiger Reserve, MH. (April 2023 to March 2024) Forest Guards (Foot Patrol Efforts – 210039 Kms.)

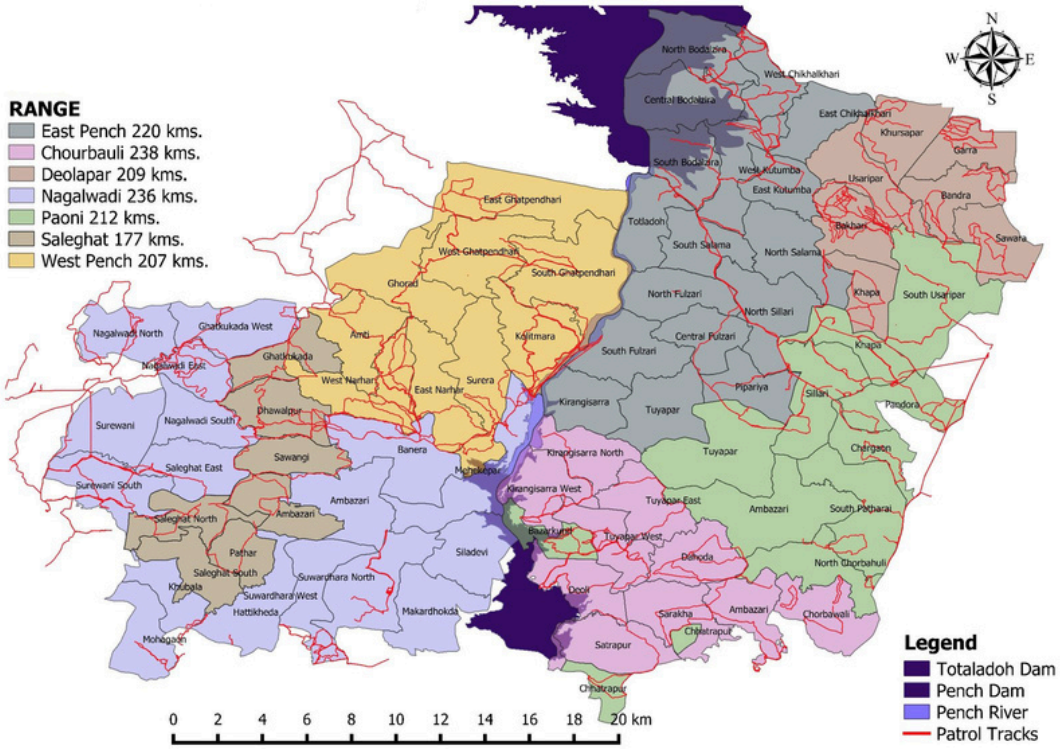


## Pench Tiger Reserve, MH. Special Tiger Protection Force (April 2023 to March 2024) (Patrol Efforts – 5537 Kms.)

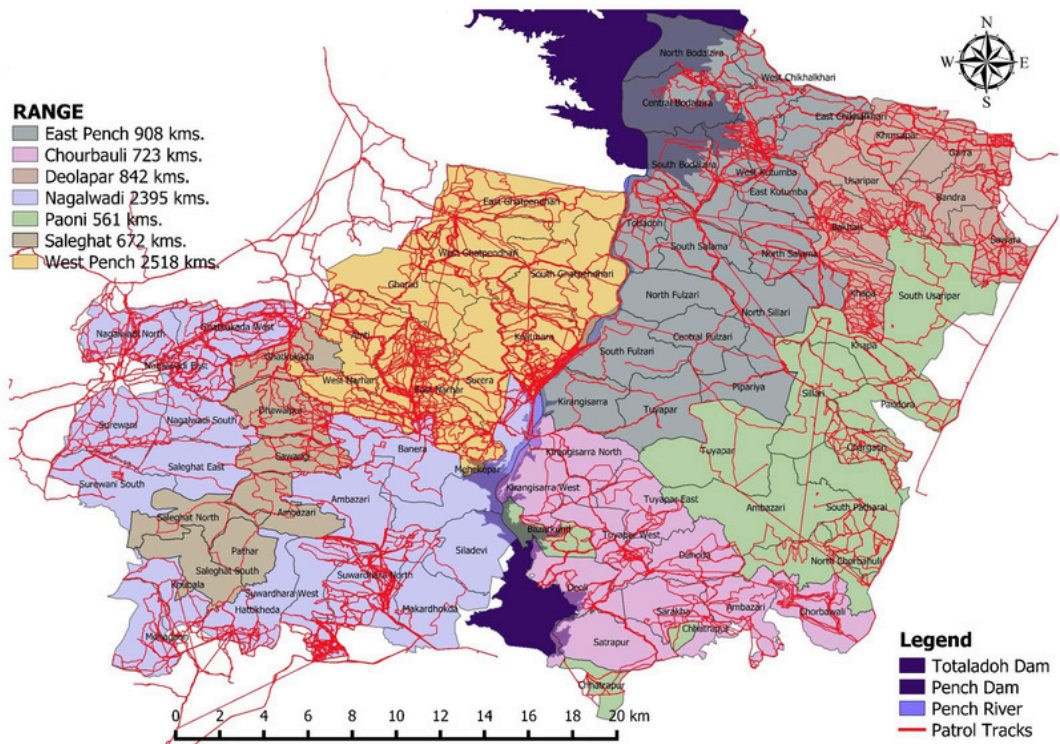




## Pench Tiger Reserve, MH. (April 2023 to March 2024) (RFO Patrol Efforts - 1499 Kms.)

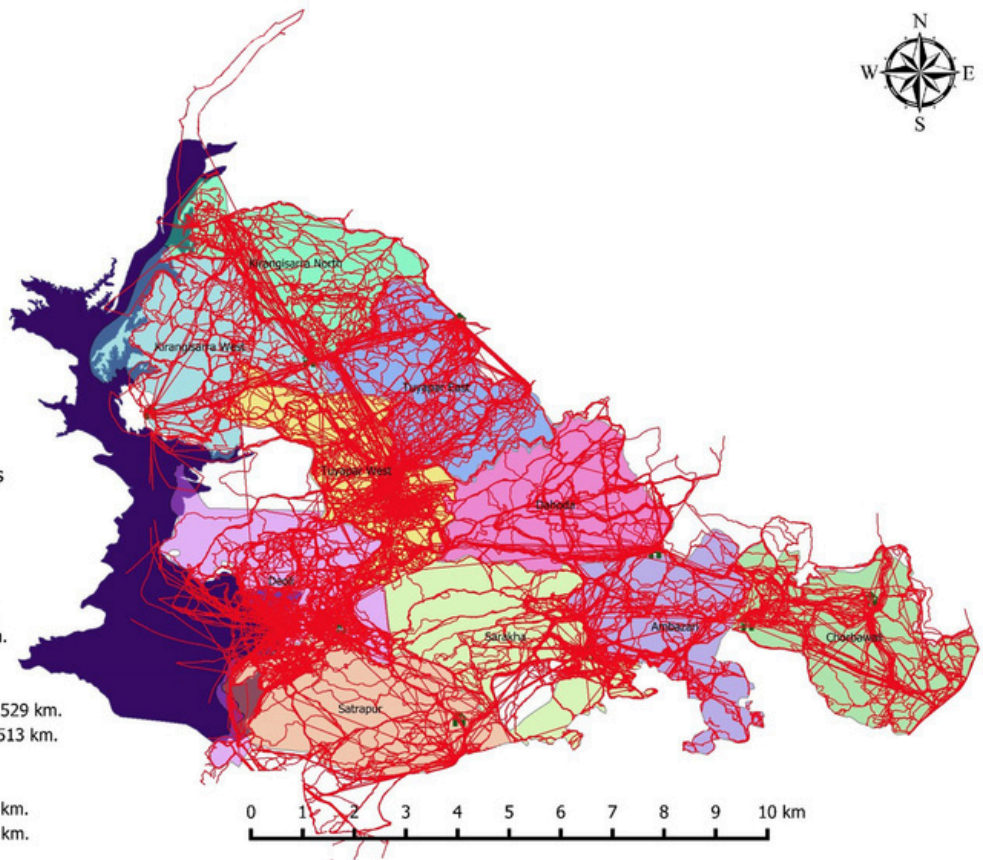


## Pench Tiger Reserve, MH. (April 2023 to March 2024) RO Patrol Efforts - 8619 Kms.





## Chorbahuli Range, Pench Tiger Reserve, MH. (April 2023 to March 2024) Foot Patrol Efforts – 25036 Kms.



### Chorbahuli Range

Foot Patrolling														
Round	Beat	Apr-23	May-23	Jun-23	Jul-23	Aug-23	Sep-23	Oct-23	Nov-23	Dec-23	Jan-24	Feb-24	Mar-24	Total
Chorbahuli	Ambazari	201	199	210	201	211	211	199	213	184	195	206	211	2442
Chorbahuli	Chorbahuli	202	209	229	202	185	178	202	189	192	208	210	176	2383
Kirangisarra	Dahoda	230	220	217	214	215	229	238	227	238	219	219	233	2700
Chorbahuli	Deoli	206	191	218	207	182	189	201	227	182	198	240	230	2471
Kirangisarra	East Tuyapar	223	205	211	202	180	225	210	212	217	213	194	219	2511
Kirangisarra	North Kirangisarra	220	216	199	226	217	205	209	190	196	238	193	219	2529
Chorbahuli	Sarakha	211	214	217	219	211	220	205	196	191	190	165	190	2428
Chorbahuli	Satrapur	217	221	230	216	214	232	223	205	211	201	171	136	2504
Kirangisarra	West Kirangisarra	216	216	207	184	213	205	212	209	206	199	220	226	2513
Kirangisarra	West Tuyapar	209	210	200	204	204	215	220	210	221	214	218	231	2555
<b>Total</b>		<b>2135</b>	<b>2101</b>	<b>2138</b>	<b>2075</b>	<b>2032</b>	<b>2109</b>	<b>2119</b>	<b>2078</b>	<b>2038</b>	<b>2075</b>	<b>2036</b>	<b>2071</b>	<b>25036</b>

## Vehicle

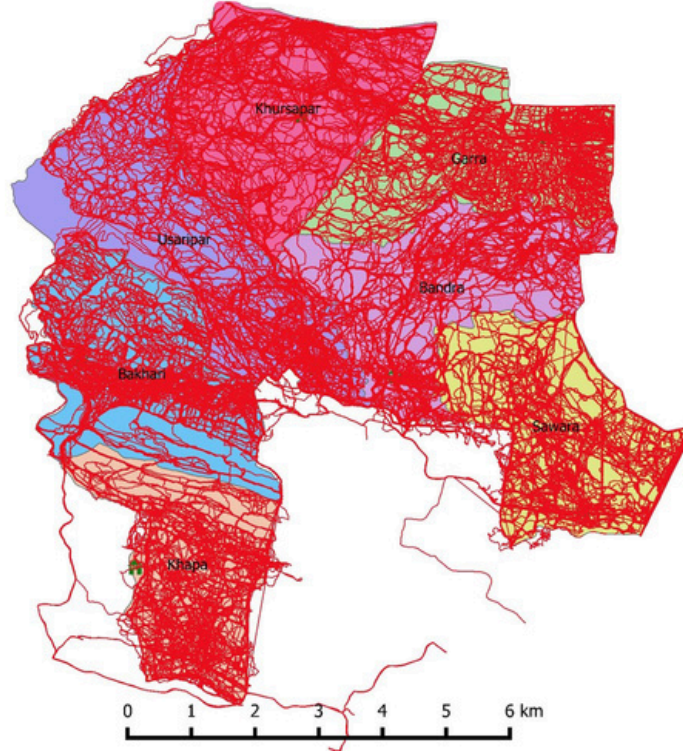
Vehicle														
Round	Beat	Apr-23	May-23	Jun-23	Jul-23	Aug-23	Sep-23	Oct-23	Nov-23	Dec-23	Jan-24	Feb-24	Mar-24	Total
Chorbahuli	Ambazari	7	17	0	8	0	0	0	9	26	12	6	3	88
Chorbahuli	Chorbahuli	28	5.82	4	15	81	31	7	12	16	0	6	14	219
Kirangisarra	Dahoda	0	0	0	0	0	0	0	0	0	5	0	0	5
Chorbahuli	Deoli	0	0	0	0	0	14	8	0	0	0	0	0	22
Kirangisarra	East Tuyapar	0	0	0	0	0	0	0	0	0	5	9	0	14
Kirangisarra	North Kirangisarra	4	12.27	10	4.79	56	19	16	17	15	0	29	17	200
Chorbahuli	Sarakha	0	0	0	0	0	0	0	0	15	18	0	19	52
Chorbahuli	Satpura	0	0	0	0	0	0	0	0	0	0	0	0	0
Kirangisarra	West Kirangisarra	7	8.24	4	0	23	0	13	5	5	20	0	0	85
Kirangisarra	West Tuyapar	0	0	11	0	0	0	0	0	0	0	0	0	11
Total		46	43.33	29	27.79	160	64	44	43	77	60	50	53	696

## Boat

Boat														
Round	Beat	Apr-23	May-23	Jun-23	Jul-23	Aug-23	Sep-23	Oct-23	Nov-23	Dec-23	Jan-24	Feb-24	Mar-24	Total
Chorbahuli	Ambazari	0	0	0	0	0	0	0	0	0	0	0	0	0
Chorbahuli	Chorbahuli	0	0	0	0	0	0	0	0	0	0	0	0	0
Kirangisarra	Dahoda	0	0	0	0	0	0	0	0	0	0	0	0	0
Chorbahuli	Deoli	11	15	0	7	7	20	16	6	28	52	11	12	185
Kirangisarra	East Tuyapar	0	0	0	0	0	0	0	0	0	0	0	0	0
Kirangisarra	North Kirangisarra	0	0	11	0	0	0	0	0	0	0	0	0	11
Chorbahuli	Sarakha	0	0	0	0	0	0	0	0	0	0	0	0	0
Chorbahuli	Satpura	0	0	0	0	0	0	0	0	0	0	0	0	0
Kirangisarra	West Kirangisarra	0	0	27	0	0	0	0	0	0	0	0	0	27
Kirangisarra	West Tuyapar	0	0	0	0	0	0	0	0	0	0	0	0	0
Total		11	15	38	7	7	20	16	6	28	52	11	12	223



## Deolapar Range, Pench Tiger Reserve, MH. (April 2023 to March 2024) Foot Patrol Efforts - 19618 Kms.



- Legend**
- Patroling Camps
  - Patrol Tracks
- PATROL BEAT**
- Bakhari 2696 km.
  - Bandra 2892 km.
  - Garra 3091 km.
  - Khapa 2756 km.
  - Khursapar 2884 km.
  - Sawara 2712 km.
  - Usaripar 2587 km.

### Deolapar Range

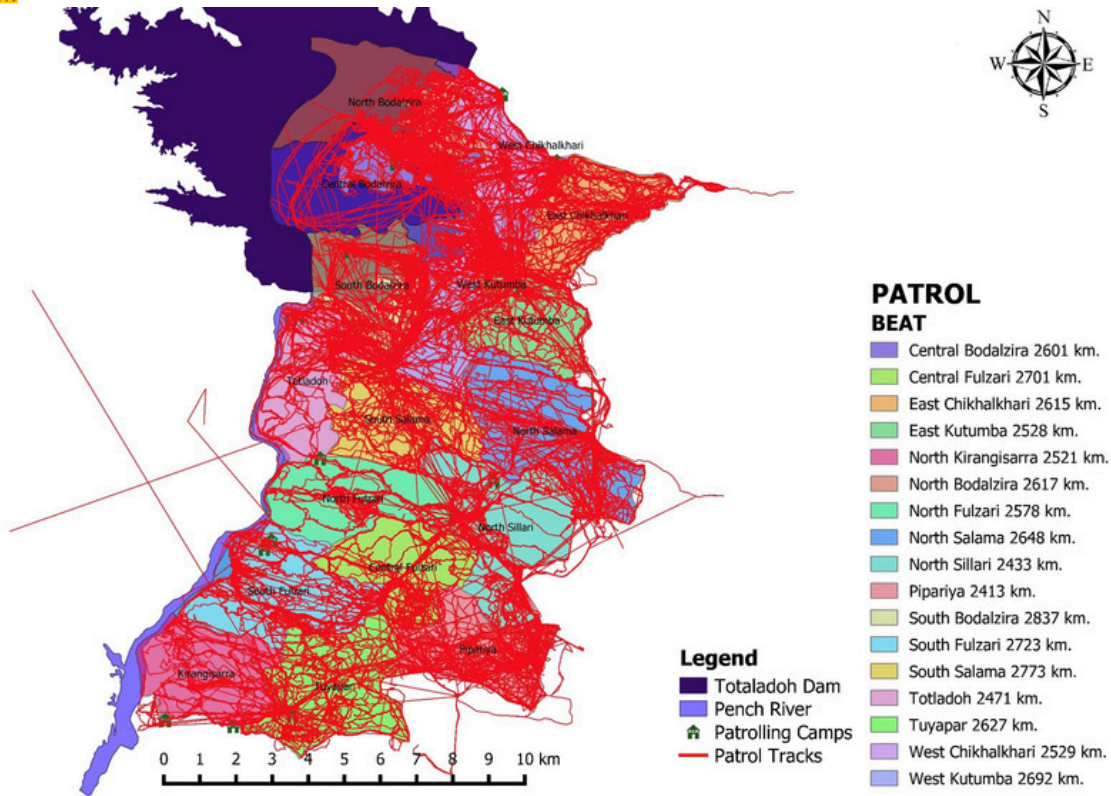
Foot Patrolling														
Round	Beat	Apr-23	May-23	Jun-23	Jul-23	Aug-23	Sep-23	Oct-23	Nov-23	Dec-23	Jan-24	Feb-24	Mar-24	Total
Khapa	Bakhari	215	220	220	250	231	212	222	217	222	219	225	206	2696
Deolapar	Bandra	290	255	243	247	223	225	262	219	233	217	229	249	2892
Deolapar	Garra	277	247	247	249	250	249	254	270	273	258	241	276	3091
Khapa	Khapa	236	218	228	254	229	226	228	224	231	234	224	225	2756
Deolapar	Khursapar	237	248	250	234	203	228	243	233	242	233	224	309	2884
Deolapar	Sawara	240	228	206	271	218	208	232	220	224	207	235	222	2712
Khapa	Usaripar	227	224	228	231	186	228	208	213	216	209	203	214	2587
<b>Total</b>		1722	1640	1622	1736	1540	1576	1649	1596	1641	1577	1581	1701	19618

Vehicle														
Round	Beat	Apr-23	May-23	Jun-23	Jul-23	Aug-23	Sep-23	Oct-23	Nov-23	Dec-23	Jan-24	Feb-24	Mar-24	Total
Khapa	Bakhari	10	0	0	0	0	0	6	0	0	0	0	0	16
Deolapar	Bandra	0	10	28	0	0	44	0	0	0	0	10	0	92
Deolapar	Garra	29	2	0	0	10	0	0	0	0	0	0	52	92
Khapa	Khapa	0	8	0	0	0	10	0	0	0	0	0	18	36
Deolapar	Khursapar	0	0	0	17	0	0	9	45	24	9	0	24	128
Deolapar	Sawara	6	15	29	5	30	27	0	21	16	44	0	68	261
Khapa	Usaripar	16	0	0	6	0	0	20	0	0	0	11	0	53
<b>Total</b>		61	35	57	28	40	81	35	66	40	53	21	162	678





## East Pench Range, Pench Tiger Reserve, MH. (April 2023 to March 2024) Foot Patrol Efforts - 44306 Kms.



### East Pench Range

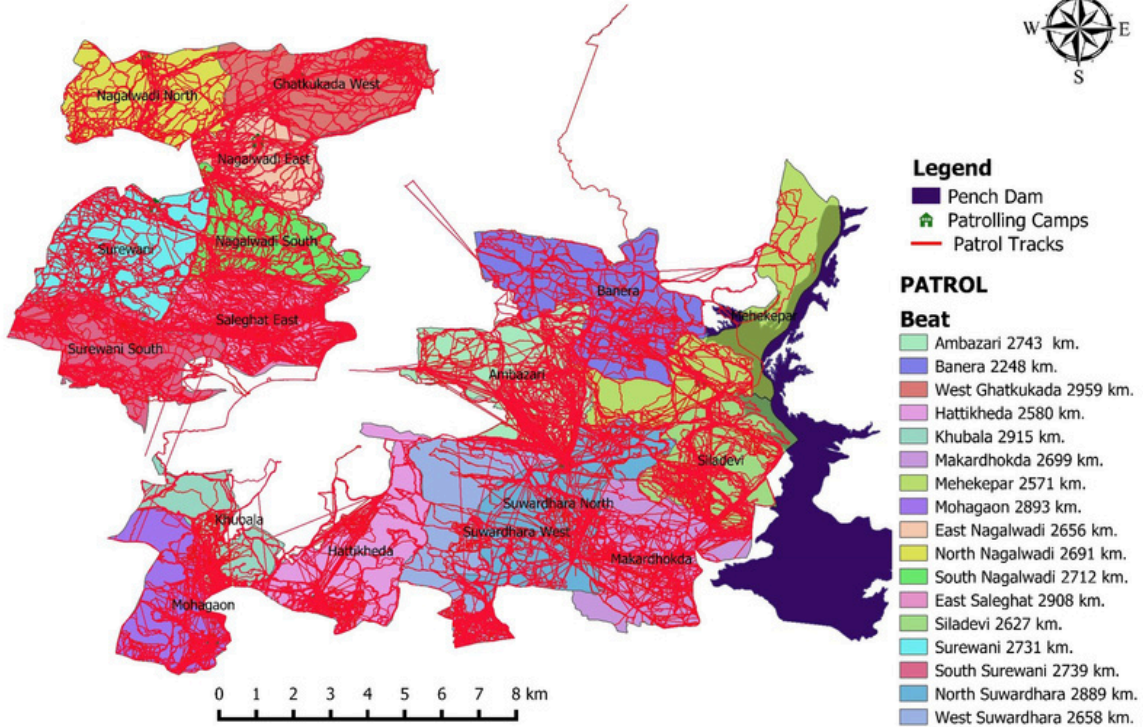
Foot Patrolling														
Round	Beat	Apr-23	May-23	Jun-23	Jul-23	Aug-23	Sep-23	Oct-23	Nov-23	Dec-23	Jan-24	Feb-24	Mar-24	Total
North Salama	Central Bodalzira	213	210	200	214	227	197	213	214	244	261	184	224	2601
Sillari	Central Fulzari	208	205	212	223	202	236	270	214	233	244	222	231	2701
North Salama	East Chikhalkhari	250	230	213	224	215	212	223	188	215	203	201	239	2615
South Salama	East Kutumba	207	229	160	254	216	214	257	209	211	188	177	206	2528
North Salama	North Bodalzira	234	231	176	194	244	233	213	172	235	206	252	227	2617
South Salama	North Fulzari	212	207	198	202	249	226	195	204	216	248	206	216	2578
Sillari	N. Kirangisara	194	187	182	242	232	201	211	239	212	204	210	207	2521
South Salama	N. Salama	216	214	197	203	210	218	203	205	221	244	226	292	2648
Sillari	N. Sillari	192	174	185	173	211	189	221	202	208	240	210	228	2433
Sillari	Pipariya	176	173	204	211	210	211	218	207	207	189	204	203	2413
North Salama	S. Bodalzira	239	266	206	231	210	214	246	223	238	250	229	285	2837
Sillari	S. Fulzari	196	202	181	190	217	229	265	247	234	265	235	262	2723
South Salama	S. Salama	252	211	132	194	233	233	268	247	224	278	250	251	2773
South Salama	Totaladoh	205	199	174	207	230	210	219	182	229	210	203	203	2471
Sillari	Tuyapar	200	136	171	214	222	208	240	227	225	203	215	367	2627
North Salama	W. Chikhalkhari	235	216	185	180	223	210	197	211	227	243	196	224	2529
South Salama	W. Kutumba	223	209	165	234	236	234	233	208	226	269	198	256	2692
<b>Total</b>		<b>3652</b>	<b>3499</b>	<b>3141</b>	<b>3590</b>	<b>3787</b>	<b>3675</b>	<b>3892</b>	<b>3599</b>	<b>3805</b>	<b>3945</b>	<b>3618</b>	<b>4121</b>	<b>44307</b>

Vehicle														
Round	Beat	Apr-23	May-23	Jun-23	Jul-23	Aug-23	Sep-23	Oct-23	Nov-23	Dec-23	Jan-24	Feb-24	Mar-24	Total
North Salama	Central Bodalzira	0	0	0	0	10	22	5	33	0	0	0	0	70
Sillari	Central Fulzari	0	0	0	0	0	0	0	0	0	0	0	0	0
North Salama	East Chikhalkhari	0	0	0	8	0	6	0	12	20	0	0	0	46
South Salama	East Kutumba	0	0	151	65	21	0	12	50	30	87	53	18	495
North Salama	North Bodalzira	0	18	24	34	18	0	39	50	56	0	0	0	246
South Salama	North Fulzari	0	5	0	108	51	46	30	122	151	137	201	100	951
Sillari	N. Kirrangisara	0	0	26	21	51	46	77	15	49	89	62	92	528
South Salama	N. Salama	0	0	0	0	0	0	17	48	32	8	12	0	117
Sillari	N. Sillari	0	83	100	21	0	0	0	0	0	0	0	0	204
Sillari	Pipariya	0	0	0	10	0	4	0	0	0	0	0	0	14
North Salama	S. Bodalzira	0	0	178	51	49	26	48	19	105	124	32	6	638
Sillari	S. Fulzari	0	29	0	0	0	0	0	0	0	0	0	0	29
South Salama	S. Salama	0	60	217	41	12	0	0	0	60	0	0	0	390
South Salama	Totaladoh	0	15	188	0	0	0	0	5	0	41	17	132	398
Sillari	Tuyapar	12	8	28	15	0	5	0	0	26	27	0	15	136
North Salama	W. Chikhalkhari	0	0	63	0	0	0	58	36	56	0	0	0	213
South Salama	W. Kutumba	0	0	112	0	15	0	16	9	92	9	49	0	302
Total		12	218	1087	374	227	155	302	399	677	522	426	363	4777

Boat														
Round	Beat	Apr-23	May-23	Jun-23	Jul-23	Aug-23	Sep-23	Oct-23	Nov-23	Dec-23	Jan-24	Feb-24	Mar-24	Total
North Salama	Central Bodalzira	0	0	30	0	0	0	0	0	0	0	0	0	30
Sillari	Central Fulzari	0	0	0	0	0	0	0	0	0	0	0	0	0
North Salama	East Chikhalkhari	0	0	0	0	0	0	0	0	0	0	0	0	0
South Salama	East Kutumba	0	0	0	0	0	0	0	0	0	0	0	0	0
North Salama	North Bodalzira	11	0	41	16	0	0	0	0	0	25	0	0	93
South Salama	North Fulzari	0	0	0	0	0	0	0	0	0	0	0	0	0
Sillari	N. Kirrangisara	14	0	13	0	0	0	0	0	0	0	0	0	27
South Salama	N. Salama	0	0	0	0	0	0	0	0	0	0	0	0	0
Sillari	N. Sillari	0	0	0	0	0	0	0	0	0	0	0	0	0
Sillari	Pipariya	0	3	0	0	0	0	0	4	0	0	0	0	7
North Salama	S. Bodalzira	0	0	0	0	0	13	0	0	3	41	0	0	57
Sillari	S. Fulzari	0	0	0	0	0	0	0	0	0	0	0	0	0
South Salama	S. Salama	0	0	0	0	0	0	0	0	0	0	0	0	0
South Salama	Totaladoh	0	0	0	0	0	0	0	0	0	0	0	0	0
Sillari	Tuyapar	25	0	0	0	0	0	0	0	0	0	0	0	25
North Salama	W. Chikhalkhari	0	0	0	0	0	0	0	0	0	0	0	0	0
South Salama	W. Kutumba	0	0	0	0	0	0	0	0	0	0	0	0	0
Total		50	3	84	16	0	13	0	4	3	66	0	0	239



## Nagalwadi Range, Pench Tiger Reserve, MH. (April 2023 to March 2024) Foot Patrol Efforts – 46201 Kms.



### Nagalwadi Range

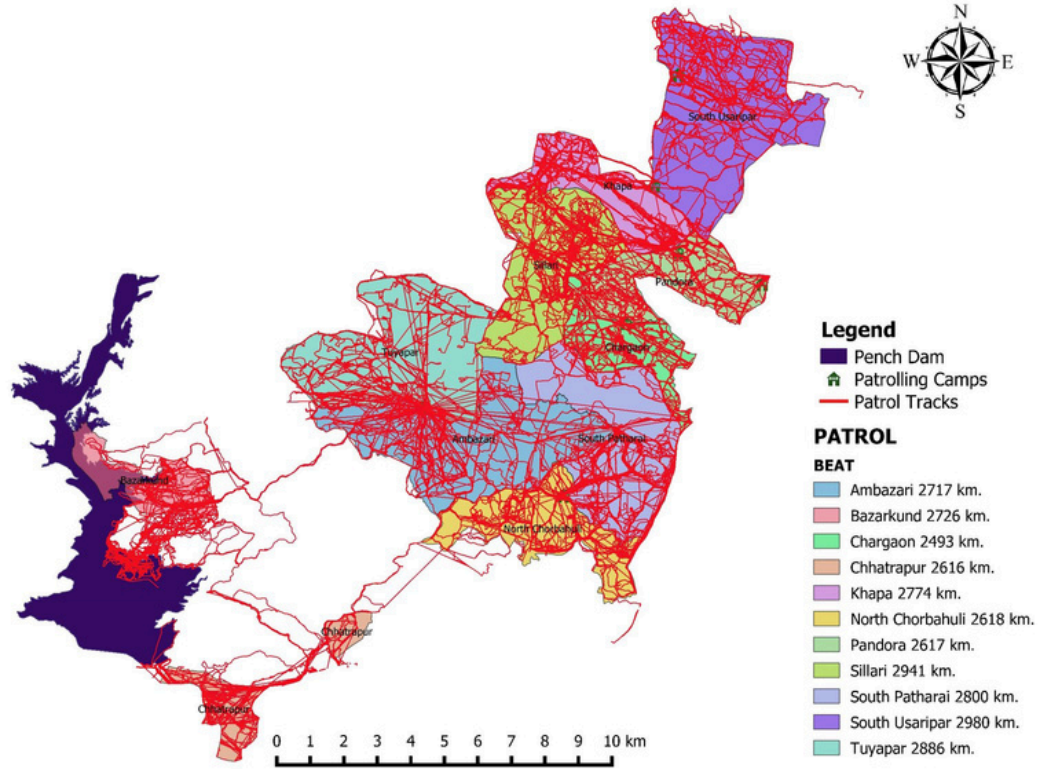
Foot Patrolling														
Round	Beat	Apr-23	May-23	Jun-23	Jul-23	Aug-23	Sep-23	Oct-23	Nov-23	Dec-23	Jan-24	Feb-24	Mar-24	Total
Ambazari	Ambazari	221	223	201	222	220	213	209	196	246	221	252	318	2743
Ambazari	Banera	189	123	162	181	225	208	202	222	228	192	155	160	2248
Nagalwadi	E. Nagawadi	216	223	216	216	228	220	221	219	218	232	227	220	2656
Surewani	E. Saleghat	261	237	231	306	220	225	210	251	267	210	242	249	2908
Suwardhara	Hetikheda	214	212	197	219	219	208	206	208	215	228	226	228	2580
Suwardhara	Khubala	250	216	212	325	232	218	223	219	263	259	248	250	2915
Ambazari	Mehkepar	168	159	212	191	208	227	212	242	242	230	205	274	2471
Ambazari	Makardhokda	237	232	224	222	196	214	227	232	267	215	224	209	2699
Suwardhara	Mohagaon	229	233	191	268	232	234	257	240	240	260	238	270	2893
Nagalwadi	N. Nagalwadi	232	237	235	241	219	212	218	223	222	224	208	220	2691
Suwardhara	N. Suwardhara	278	214	196	233	241	209	224	203	289	273	239	290	2889
Ambazari	Shiladevi	189	235	207	200	220	207	224	247	212	214	207	265	2627
Surewani	S. Nagalwadi	228	233	213	231	241	225	221	217	223	222	226	232	2712
Surewani	S. Surewani	218	222	219	325	222	216	225	218	216	217	215	226	2739
Surewani	Surewani	219	219	229	223	233	219	223	222	233	227	223	244	2713
Nagalwadi	W. Ghatkukda	241	232	235	256	265	244	244	215	240	259	256	272	2959
Suwardhara	W. Suwardhara	281	225	193	231	195	216	189	196	208	215	258	252	2658
<b>Total</b>		<b>3871</b>	<b>3675</b>	<b>3573</b>	<b>4090</b>	<b>3816</b>	<b>3715</b>	<b>3735</b>	<b>3770</b>	<b>4029</b>	<b>3898</b>	<b>3849</b>	<b>4179</b>	<b>46101</b>

Vehicle														
Round	Beat	Apr-23	May-23	Jun-23	Jul-23	Aug-23	Sep-23	Oct-23	Nov-23	Dec-23	Jan-24	Feb-24	Mar-24	Total
Ambazari	Ambazari	0	0	0	67	0	0	55	15	15	0	0	121	273
Ambazari	Banera	0	18	0	45	0	6	10	8	0	37	42	65	231
Nagalwadi	E. Nagawadi	0	0	31	0	0	0	0	0	0	30	79	161	301
Surewani	E. Saleghat	0	0	0	0	0	0	0	0	0	0	0	0	0
Suwardhara	Hetikheda	0	0	0	13	0	0	0	4	28	22	0	13	80
Suwardhara	Khubala	0	0	0	30	0	0	0	0	0	0	0	6	36
Ambazari	Mehkepar	0	33	34	25	0	0	15	0	0	0	18	0	125
Ambazari	Makardhokda	0	0	27	38	0	2	10	25	93	32	16	40	283
Suwardhara	Mohgaon	0	0	21	30	0	17	0	0	11	18	0	26	123
Nagalwadi	N. Nagalwadi	51	57	0	34	0	44	0	0	0	35	54	111	385
Suwardhara	N. Suwardhara	0	0	0	0	0	16	36	19	0	33	150	92	346
Ambazari	Shiladevi	6	0	0	110	0	16	3	23	44	16	36	29	283
Surewani	S. Nagalwadi	0	0	0	0	0	0	0	0	0	0	0	87	87
Surewani	S. Surewani	0	0	0	29	0	0	0	0	0	0	0	59	88
Surewani	Surewani	0	0	0	3	0	43	0	0	0	0	0	0	46
Nagalwadi	W. Ghatkukda	0	0	0	0	0	0	0	6	0	34	96	10	146
Suwardhara	W. Suwardhara	0	0	38	0	0	2	52	37	0	0	0	11	141
Total		57	108	151	424	0	146	181	137	191	257	491	831	2974





## Paoni Range, Pench Tiger Reserve, MH. (April 2023 to March 2024) Foot Patrol Efforts – 30167 Kms.



### Paoni Range

Foot Patrolling														
Round	Beat	Apr-23	May-23	Jun-23	Jul-23	Aug-23	Sep-23	Oct-23	Nov-23	Dec-23	Jan-24	Feb-24	Mar-24	Total
Chorbahuli	Ambazari	259	241	248	223	227	189	231	225	233	218	220	221	2717
Chorbahuli	Bajarkund	258	230	226	206	227	220	227	202	225	268	212	225	2726
Paoni	Chargaon	216	201	196	203	224	216	201	212	216	212	187	209	2493
Paoni	Khapa	227	225	240	246	241	225	216	214	233	243	224	240	2774
Chorbahuli	N. Chorbahuli	234	221	222	210	194	209	204	203	241	223	236	221	2618
Paoni	Palora	221	225	237	228	214	217	214	206	232	208	208	208	2617
Chorbahuli	Chhatrapur	223	207	221	213	208	221	217	223	209	230	217	227	2616
Paoni	Sillari	300	255	253	234	202	247	268	208	255	203	228	287	2941
Paoni	S. Patharai	301	252	242	234	235	210	233	209	176	231	217	261	2800
Paoni	South Usaripar	250	250	252	286	216	270	257	248	238	231	244	237	2980
Chorbahuli	Tuyapar	265	296	227	223	256	225	226	252	244	215	212	245	2886
<b>Total</b>		<b>2754</b>	<b>2603</b>	<b>2564</b>	<b>2506</b>	<b>2444</b>	<b>2449</b>	<b>2494</b>	<b>2402</b>	<b>2502</b>	<b>2482</b>	<b>2405</b>	<b>2581</b>	<b>30168</b>

Foot Patrolling														
Round	Beat	Apr-23	May-23	Jun-23	Jul-23	Aug-23	Sep-23	Oct-23	Nov-23	Dec-23	Jan-24	Feb-24	Mar-24	Total
Chorbahuli	Ambazari	6	0	0	0	0	53	9	0	0	0	0	0	68
Chorbahuli	Bajarkund	0	0	0	0	0	0	0	24	0	0	0	0	24
Paoni	Chargaon	0	0	0	0	0	0	36	24	45	13	8	0	126
Paoni	Khapa	0	0	0	0	0	0	0	0	0	0	0	0	0
Chorbahuli	N. Chorbahuli	0	0	0	16	7	0	0	0	0	0	0	0	23
Paoni	Palora	21	4	0	19	0	0	3	17	3	9	18	27	121
Chorbahuli	Chhatrapur	0	0	0	0	0	0	0	0	0	0	0	0	0
Paoni	Sillari	0	0	0	0	0	19	0	16	0	0	0	0	35
Paoni	S. Patharai	0	0	0	0	0	0	0	0	0	0	0	0	0
Paoni	South Usaripar	0	0	0	3	0	0	17	0	0	0	0	184	204
Chorbahuli	Tuyapar	0	0	0	7	10	55	21	0	0	0	0	2	93
Total		26	4	0	45	17	127	86	81	48	22	26	213	694





## Saleghat Range, Pench Tiger Reserve, MH. (April 2023 to March 2024) Foot Patrol Efforts – 18429 Kms.

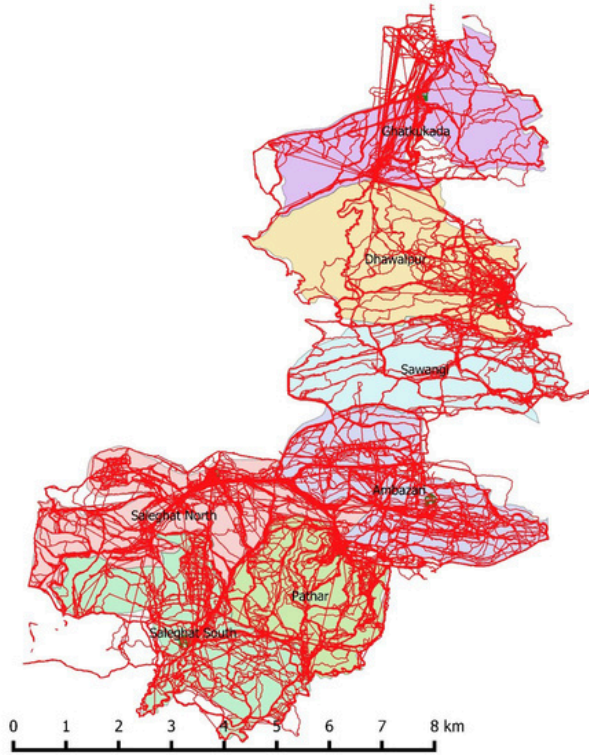


### Legend

- Patrolling Camps
- Patrol Tracks

### PATROL BEAT

- Ambazari 2741 km.
- Dhawalpur 2618 km.
- Ghatkukada 2640 km.
- Pathar 2773 km.
- North Saleghat 2547 km.
- South Saleghat 2588 km.
- Sawangi 2523 km.



## Saleghat Range

### Foot Patrolling

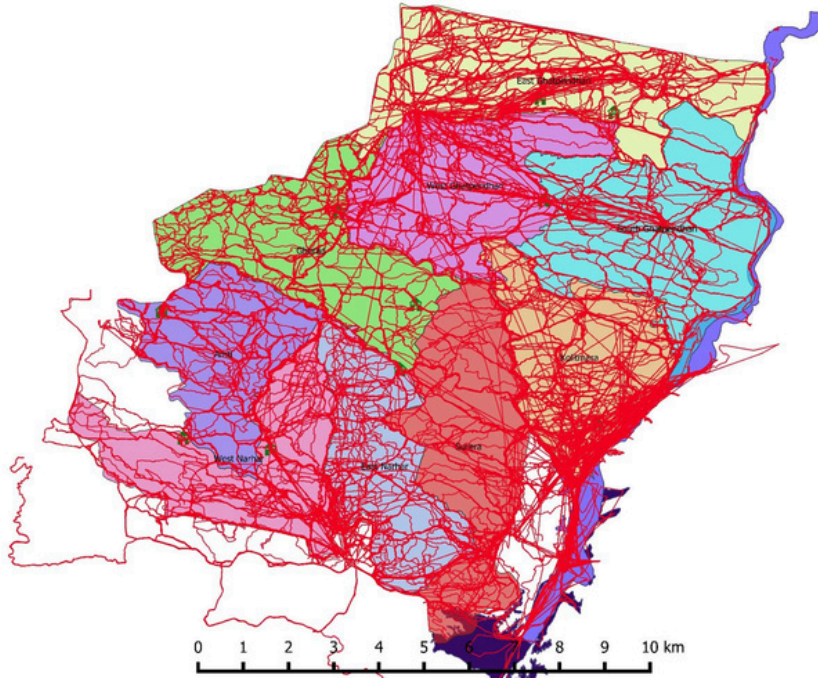
Foot Patrolling														
Round	Beat	Apr-23	May-23	Jun-23	Jul-23	Aug-23	Sep-23	Oct-23	Nov-23	Dec-23	Jan-24	Feb-24	Mar-24	Total
Saleghat	Ambazari	209	188	214	211	184	229	239	244	244	263	245	272	2741
Dhawalapur	Dhawalapur	215	216	212	204	208	215	231	211	234	225	226	221	2618
Dhawalapur	Ghatkukada	219	222	211	206	210	208	233	209	259	203	233	227	2640
Saleghat	N. Saleghat	213	185	200	214	210	226	196	208	204	231	231	229	2547
Saleghat	Pathar	201	213	216	212	242	202	232	247	260	251	237	260	2773
Dhawalapur	Sawangi	204	216	203	205	216	201	216	208	216	231	217	190	2523
Saleghat	S. Saleghat	215	201	216	236	208	234	233	201	211	220	210	203	2588
<b>Total</b>		1476	1441	1472	1488	1478	1515	1580	1528	1628	1624	1599	1602	18430

### Vehicle

Vehicle														
Round	Beat	Apr-23	May-23	Jun-23	Jul-23	Aug-23	Sep-23	Oct-23	Nov-23	Dec-23	Jan-24	Feb-24	Mar-24	Total
Saleghat	Ambazari	0	0	0	0	0	0	0	0	0	0	0	0	0
Dhawalapur	Dhawalapur	0	0	0	0	0	0	0	0	0	0	0	0	0
Dhawalapur	Ghatkukada	0	0	0	0	0	8	0	0	0	0	0	0	8
Saleghat	N. Saleghat	0	0	0	0	0	0	0	0	0	0	0	0	0
Saleghat	Pathar	0	0	0	0	0	0	0	0	0	0	0	0	0
Dhawalapur	Sawangi	0	0	0	0	0	0	0	0	0	0	0	0	0
Saleghat	S. Saleghat	0	0	0	0	0	0	0	0	0	0	0	0	0
<b>Total</b>		0	0	0	0	0	8	0	0	0	0	0	0	8



## West Pench Range, Pench Tiger Reserve, MH. (April 2023 to March 2024) Foot Patrol Efforts – 26281 Kms.



### Legend

- Pench Dam
- Pench River
- Patrolling Camps
- Patrol Tracks

### PATROL Beat

- Amti 2474 km.
- East Ghatpendhari 2932 km.
- East Narhar 2881 km.
- Ghorad 2865 km.
- Kolutmara 3088 km.
- South Ghatpendhari 2919 km.
- Surera 3224 km.
- West Ghatpendhari 2859 km.
- West Narhar 3039 km.

## West Pench Range

Foot Patrolling														
Round	Beat	Apr-23	May-23	Jun-23	Jul-23	Aug-23	Sep-23	Oct-23	Nov-23	Dec-23	Jan-24	Feb-24	Mar-24	Total
Narhar	Amati	214	187	180	188	242	182	208	185	201	273	199	216	2474
Ghatpendhari	E. Ghatpendhari	276	234	255	194	251	234	288	236	245	236	226	257	2932
Narhar	E. Narhar	242	235	227	198	222	196	210	229	265	320	265	272	2881
Ghatpendhari	Ghorad	247	242	239	241	231	223	233	235	230	247	237	261	2865
Kolitmara	Kolitmara	287	288	253	265	209	207	267	246	256	262	253	278	3088
Ghatpendhari	S. Ghatpendhari	261	246	260	240	241	234	245	222	250	244	236	240	2919
Kolitmara	Surera	358	334	232	254	262	311	187	242	269	206	247	322	3224
Ghatpendhari	W. Ghatpendhari	262	249	217	229	254	248	208	243	247	253	245	203	2859
Narhar	W. Narhar	262	257	265	238	242	251	240	250	267	222	269	275	3039
<b>Total</b>		<b>2409</b>	<b>2272</b>	<b>2128</b>	<b>2047</b>	<b>2154</b>	<b>2086</b>	<b>2086</b>	<b>2105</b>	<b>2230</b>	<b>2263</b>	<b>2177</b>	<b>2323</b>	<b>26281</b>



Vehicle														
Round	Beat	Apr-23	May-23	Jun-23	Jul-23	Aug-23	Sep-23	Oct-23	Nov-23	Dec-23	Jan-24	Feb-24	Mar-24	Total
Narhar	Amati	32	46	45	58	25	46	39	50	43	0	23	20	427
Ghatpendhari	E. Ghatpendhari	0	11	0	0	0	0	50	66	0	0	0	6	133
Narhar	E. Narhar	20	0	33	56	45	31	38	15	0	0	0	9	247
Ghatpendhari	Ghorad	23	6	10	0	0	0	50	90	0	0	0	0	179
Kolitmara	Kolitmara	36	11	58	24	30	0	35	14	0	0	19	94	321
Ghatpendhari	S. Ghatpendhari	17	0	0	0	0	0	81	43	0	0	0	5	146
Kolitmara	Surera	0	13	150	86	0	0	11	0	0	0	0	40	300
Ghatpendhari	W. Ghatpendhari	32	6	28	5	0	0	89	34	0	0	0	6	198
Narhar	W. Narhar	20	30	37	50	36	20	45	54	0	24	0	53	369
Total		180	123	261	279	136	97	438	366	43	24	42	233	2320

Boat														
Round	Beat	Apr-23	May-23	Jun-23	Jul-23	Aug-23	Sep-23	Oct-23	Nov-23	Dec-23	Jan-24	Feb-24	Mar-24	Total
Narhar	Amati	0	0	0	0	0	0	0	0	0	0	0	0	0
Ghatpendhari	E. Ghatpendhari	0	0	0	0	0	0	0	0	0	0	0	0	0
Narhar	E. Narhar	0	0	0	0	0	0	0	0	0	0	0	0	0
Ghatpendhari	Ghorad	0	0	0	0	0	0	0	0	0	0	0	0	0
Kolitmara	Kolitmara	33	58	101	42	25	16	37	29	19	87	53	35	535
Ghatpendhari	S. Ghatpendhari	0	0	0	0	0	0	0	0	0	0	0	0	0
Kolitmara	Surera	0	0	14	0	0	0	0	7	0	16	0	0	37
Ghatpendhari	W. Ghatpendhari	0	0	0	0	0	0	0	0	0	0	0	0	0
Narhar	W. Narhar	0	0	0	0	0	0	0	0	0	0	0	0	0
Total		33	58	115	42	25	16	37	36	19	103	53	35	572



# **M-STRIPES** **Ecological Data** **Analysis**



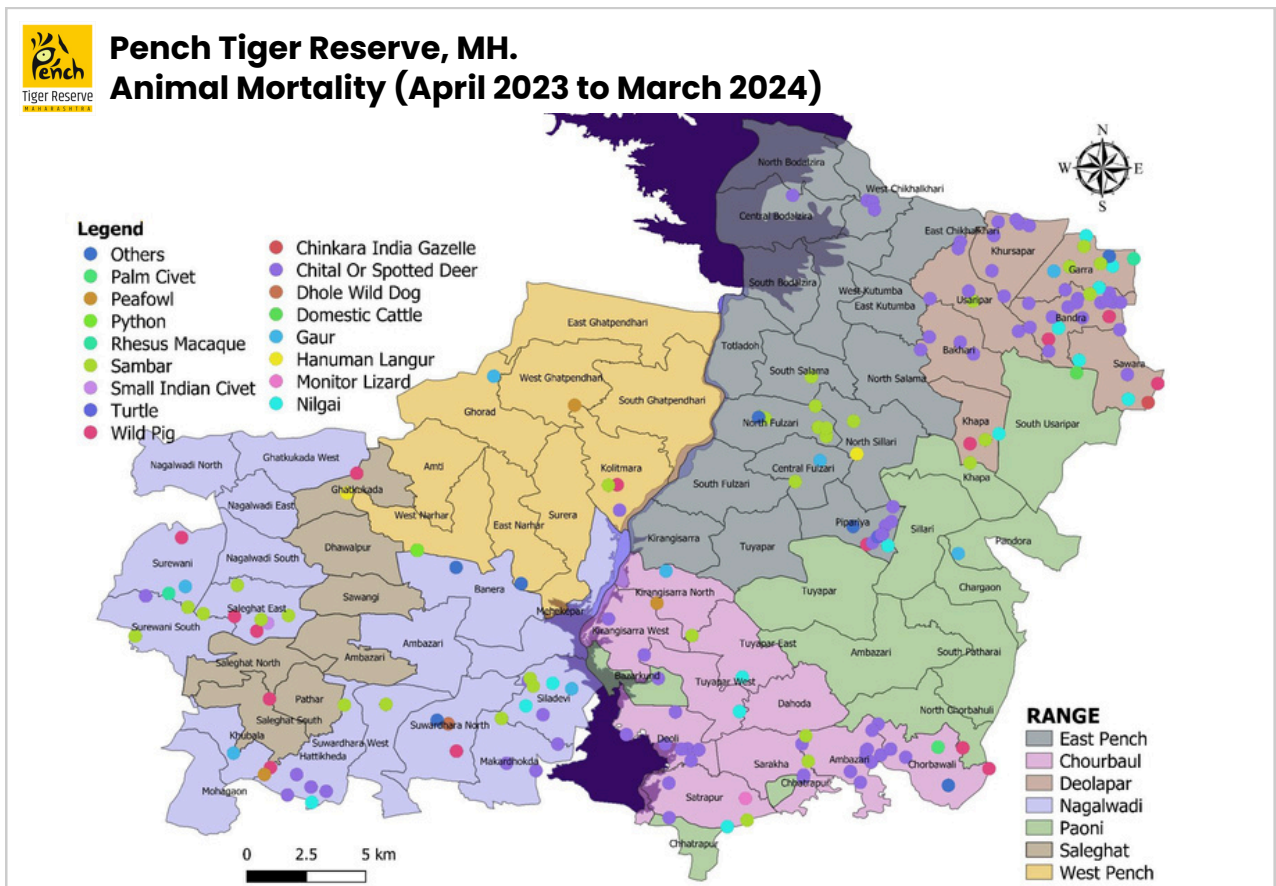
## Pench Tiger Reserve, MH. Mortalities Record (April 2023 To March 2024)

Row Labels	Chorbahuli	Deolapar	East Pench	Nagalwadi	Paoni	Saleghat	West Pench	Grand Total
Chinkara India Gazelle	0	1	0	0	0	0	0	1
Chital 'Spotted Deer	25	33	11	11	3	0	1	84
Dhole Wild Dog	0	0	0	1	0	0	0	1
Domestic Cattle	0	0	0	0	1	0	0	1
Gaur	1	1	1	2	1	1	1	8
Hanuman Langur	0	0	1	0	0	1	0	2
Monitor Lizard	1	0	0	0	0	0	0	1
Nilgai	3	8	1	3	0	0	0	15
Others	1	1	2	1	0	0	3	8
Plam Civet	1	0	0	0	0	0	0	1
Peafowl	1	0	0	1	0	0	1	3
Python	0	0	0	0	0	0	2	2
Rhesus Macaque	0	1	0	1	0	0	0	2
Sambar	3	7	9	12	1	0	1	33
Small Indian Civet	0	0	0	1	0	0	0	1
Turtle	0	0	1	0	0	0	0	1
Wild Dog	2	4	1	5	0	2	1	15
<b>Grand Total</b>	<b>38</b>	<b>56</b>	<b>27</b>	<b>38</b>	<b>6</b>	<b>4</b>	<b>10</b>	<b>179</b>

**Total Mortalities Record : 179**

**Range with Highest Mortalities Record : Deolapar - 56**

**Range with Lowest Mortalities Record : Saleghat - 4**



# Carnivore Animals Map

## Pench Tiger Reserve, MH. Carnivore Direct Sighting Record (April 2023 To March 2024)

Row Labels	Chorbahuli	Deolapar	East Pench	Nagalwadi	Paoni	Saleghat	West Pench	Grand Total
Common Grey Mongoose	14	3	44	2	0	0	8	71
Dhole Wild Dog	835	252	1174	222	131	23	130	2767
Golden Jackal	79	27	760	1	6	0	3	876
India Fox	10	0	6	0	0	0	0	16
Indian Pangolin	0	0	2	0	0	0	1	3
Jungle Cat	0	1	79	0	2	0	6	88
Leopard	20	9	50	12	1	1	10	103
Others	0	0	1	5	0	3	3	12
Palm Civet	12	0	0	2	0	0	0	14
Ratel Honey Badger	0	0	0	1	0	0	0	1
Ruddy Mongoose	2	5	107	1	0	0	0	115
Sloth Bear	4	14	154	8	10	6	2	198
Small indian Civet	1	0	3	1	0	0	0	5
Tiger	9	89	666	23	6	6	44	843
Wolf	2	0	3	0	0	0	0	5
<b>Grand Total</b>	<b>988</b>	<b>400</b>	<b>3049</b>	<b>278</b>	<b>156</b>	<b>39</b>	<b>207</b>	<b>5117</b>

**Total Carnivore Direct Sighting Record : 5117**

**Range with Highest Carnivore Direct Sighting Record : East Pench – 3049**

**Range with Lowest Carnivore Direct Sighting Record : Saleghat – 39**

## Pench Tiger Reserve, MH. Carnivore Indirect Sighting Record (April 2023 To March 2024)

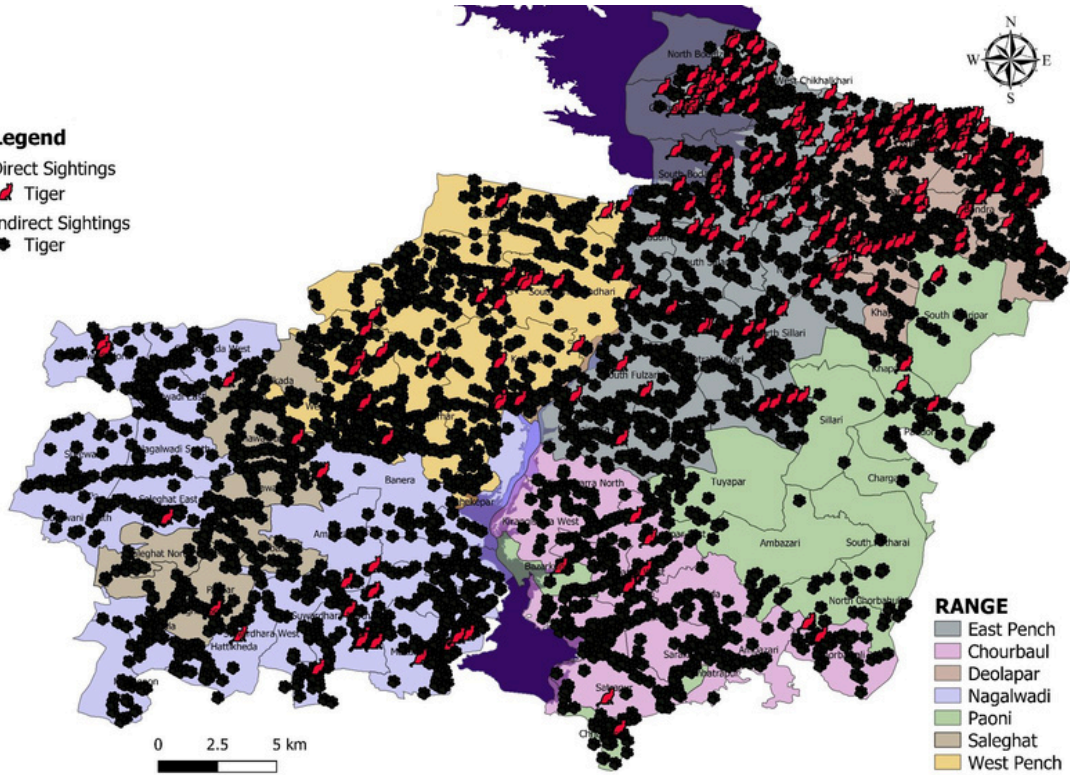
Row Labels	Digging	Kill	Pugmark Track	Rake	Rolling	Scat & Scrape	Scat Pellets Dung	Scrape	Spray	Vocalization	Grand Total
Dhole Wild Dog	0	0	31	0	0	3	16	0	0	3	53
Golden Jackal	0	0	2	0	0	0	2	0	0	0	4
Indian Fox	0	0	0	0	0	0	1	0	0	0	1
Indian Pangolin	7	0	0	0	0	0	0	1	0	0	8
Jungle Cat	0	0	2	0	0	0	1	1	0	0	4
Leopard	4	1	188	0	0	25	23	36	0	4	281
Others	0	0	2	0	0	1	1	0	0	0	4
Palm Civet	0	0	1	0	0	1	0	0	0	0	2
Ratel Honey Badger	0	0	4	0	0	0	0	0	0	0	4
Ruddy Mongoose	0	0	1	0	0	0	0	0	0	0	1
Sloth Bear	5	0	58	2	0	2	3	9	0	0	79
Small indian Civet	0	0	0	0	0	0	0	1	0	0	1
Tiger	9	2	1155	11	4	137	79	158	2	7	1564
Wolf	0	0	1	0	0	0	0	2	0	0	1
<b>Grand Total</b>	<b>25</b>	<b>3</b>	<b>1445</b>	<b>13</b>	<b>4</b>	<b>169</b>	<b>126</b>	<b>208</b>	<b>2</b>	<b>14</b>	<b>2007</b>



### Pench Tiger Reserve, MH. (April 2023 to March 2024) Tiger Direct and Indirect Sightings

#### Legend

- Direct Sightings
- Tiger
- Indirect Sightings
- Tiger



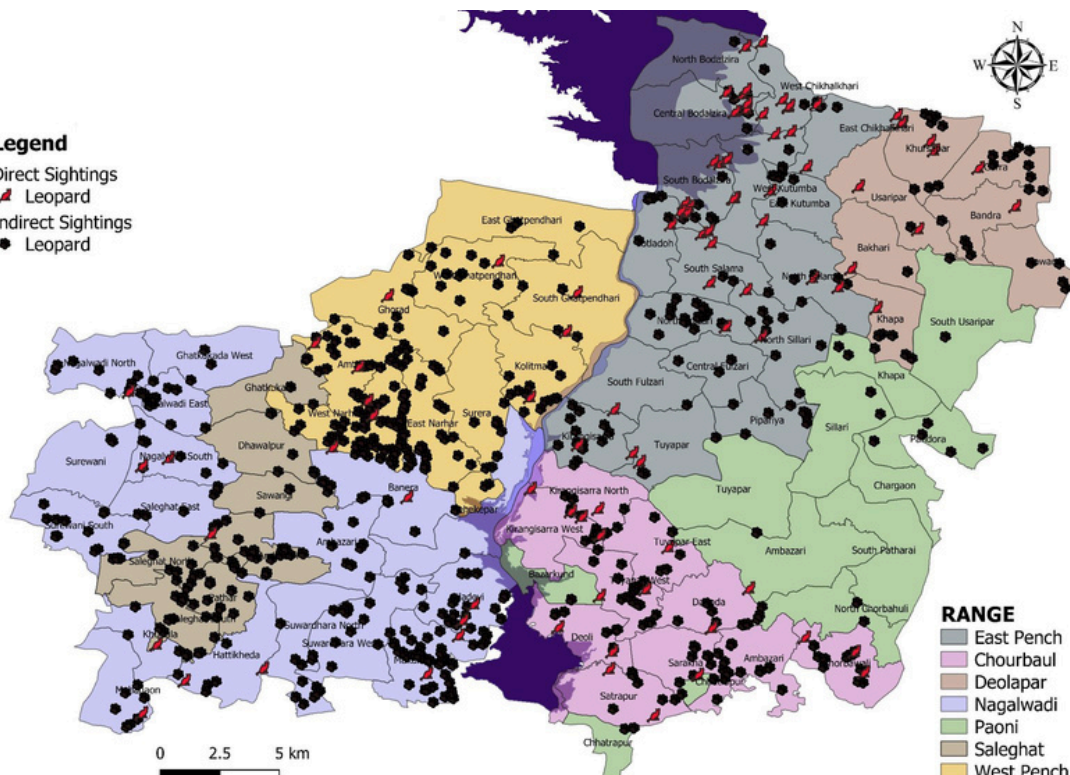
- #### RANGE
- East Pench
  - Chourbaul
  - Deolapar
  - Nagalwadi
  - Paoni
  - Saleghat
  - West Pench



### Pench Tiger Reserve, MH. (April 2023 to March 2024) Lopard Direct and Indirect Sightings

#### Legend

- Direct Sightings
- Leopard
- Indirect Sightings
- Leopard



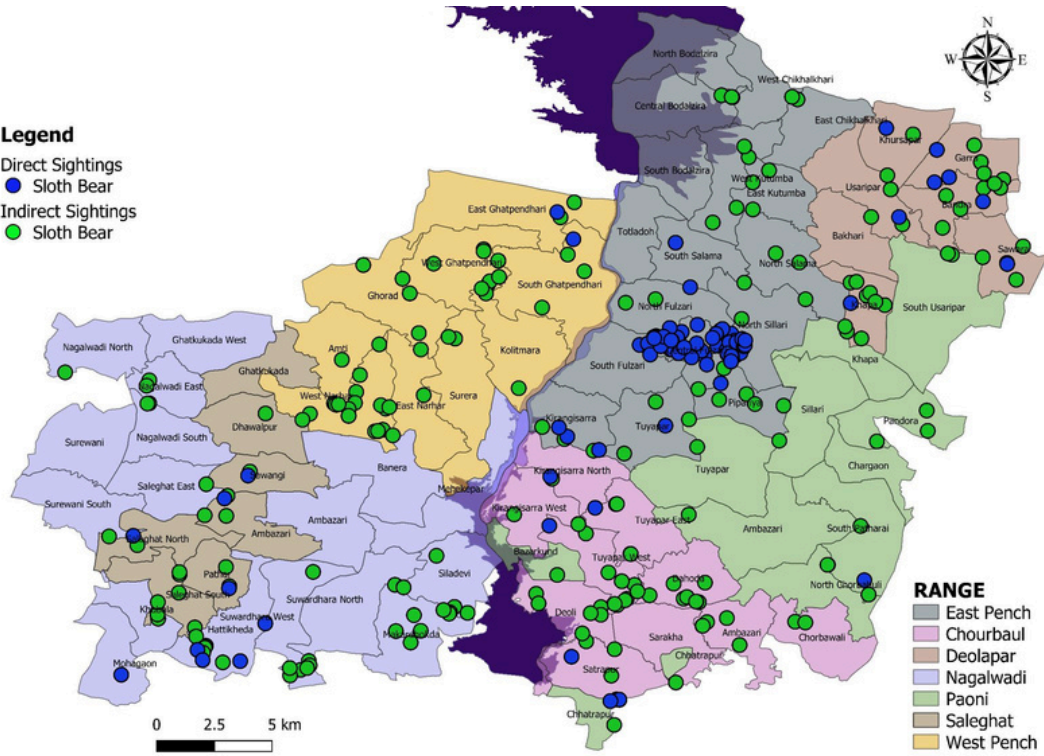
- #### RANGE
- East Pench
  - Chourbaul
  - Deolapar
  - Nagalwadi
  - Paoni
  - Saleghat
  - West Pench



### Pench Tiger Reserve, MH. (April 2023 to March 2024) Sloth Bear Direct and Indirect Sightings

#### Legend

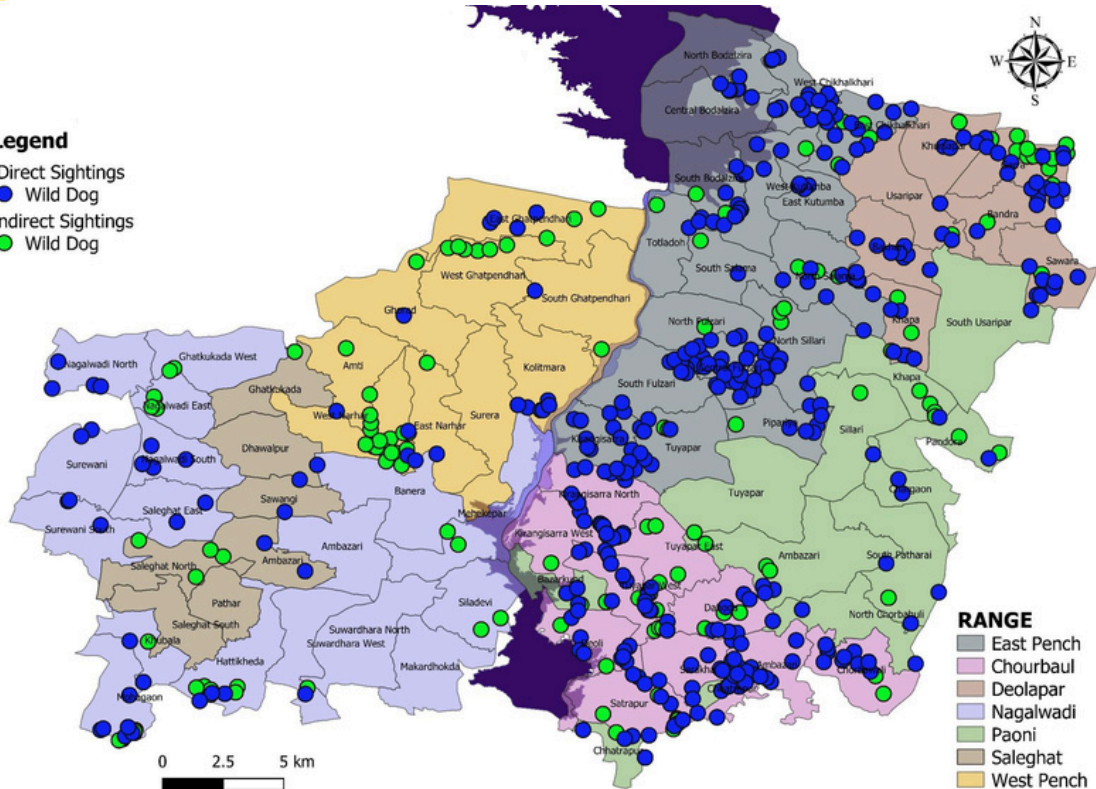
- Direct Sightings
- Sloth Bear
- Indirect Sightings
- Sloth Bear



### Pench Tiger Reserve, MH. (April 2023 to March 2024) Wild Dog Direct and Indirect Sightings

#### Legend

- Direct Sightings
- Wild Dog
- Indirect Sightings
- Wild Dog

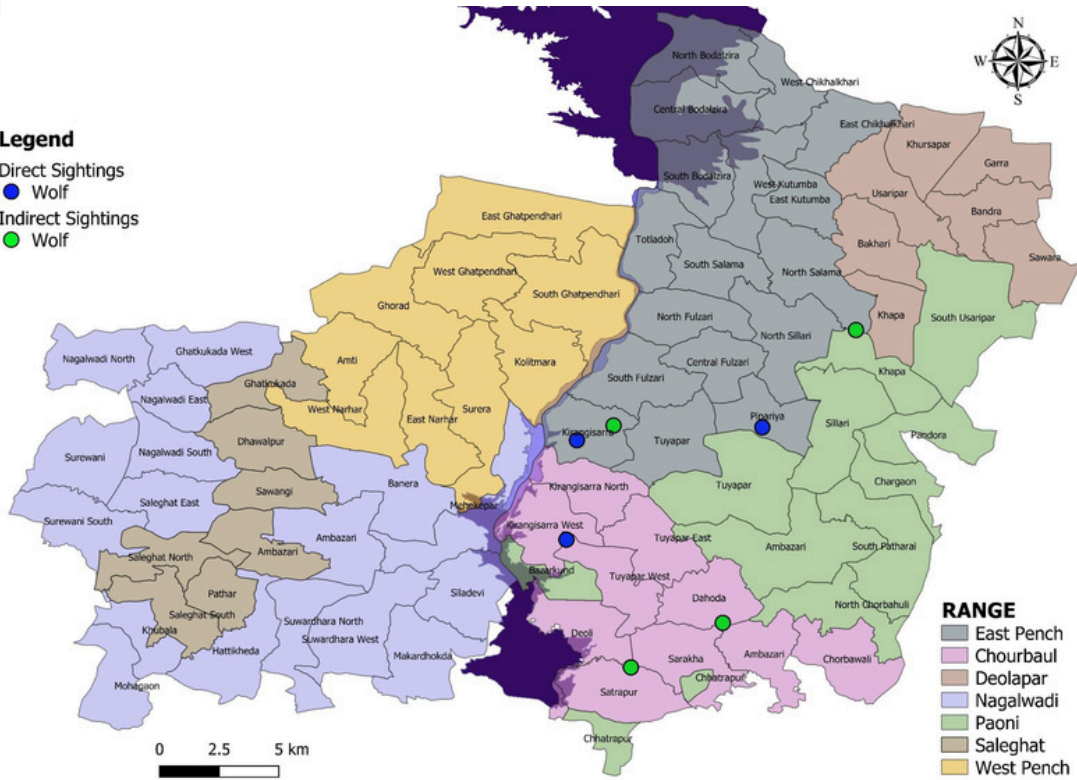




### Pench Tiger Reserve, MH. (April 2023 to March 2024) Wolf Direct and Indirect Sightings

#### Legend

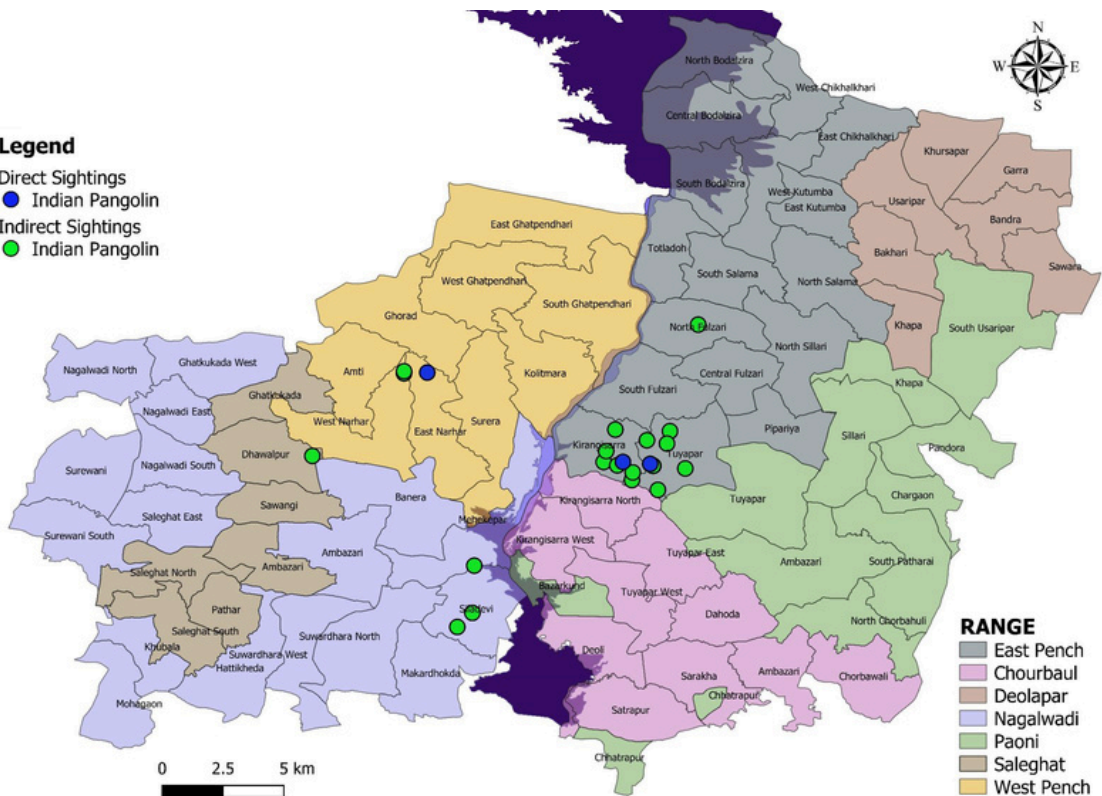
- Direct Sightings
- Wolf
- Indirect Sightings
- Wolf



### Pench Tiger Reserve, MH. (April 2023 to March 2024) Indian Pangolin Direct and Indirect Sightings

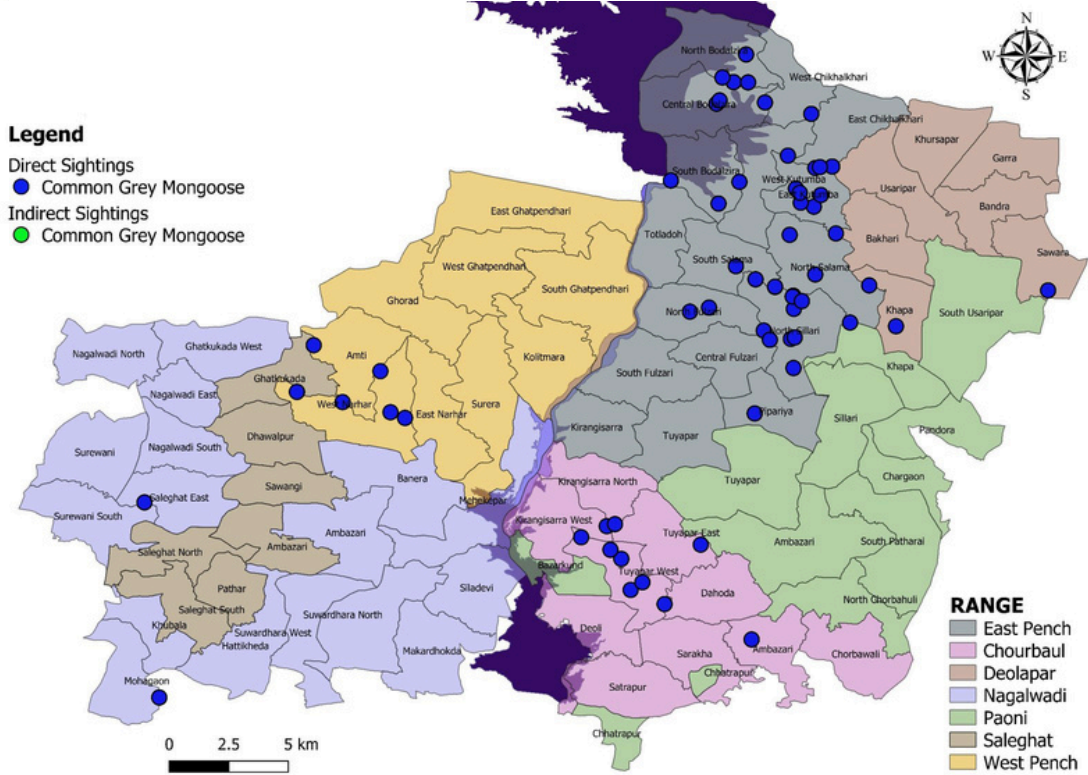
#### Legend

- Direct Sightings
- Indian Pangolin
- Indirect Sightings
- Indian Pangolin

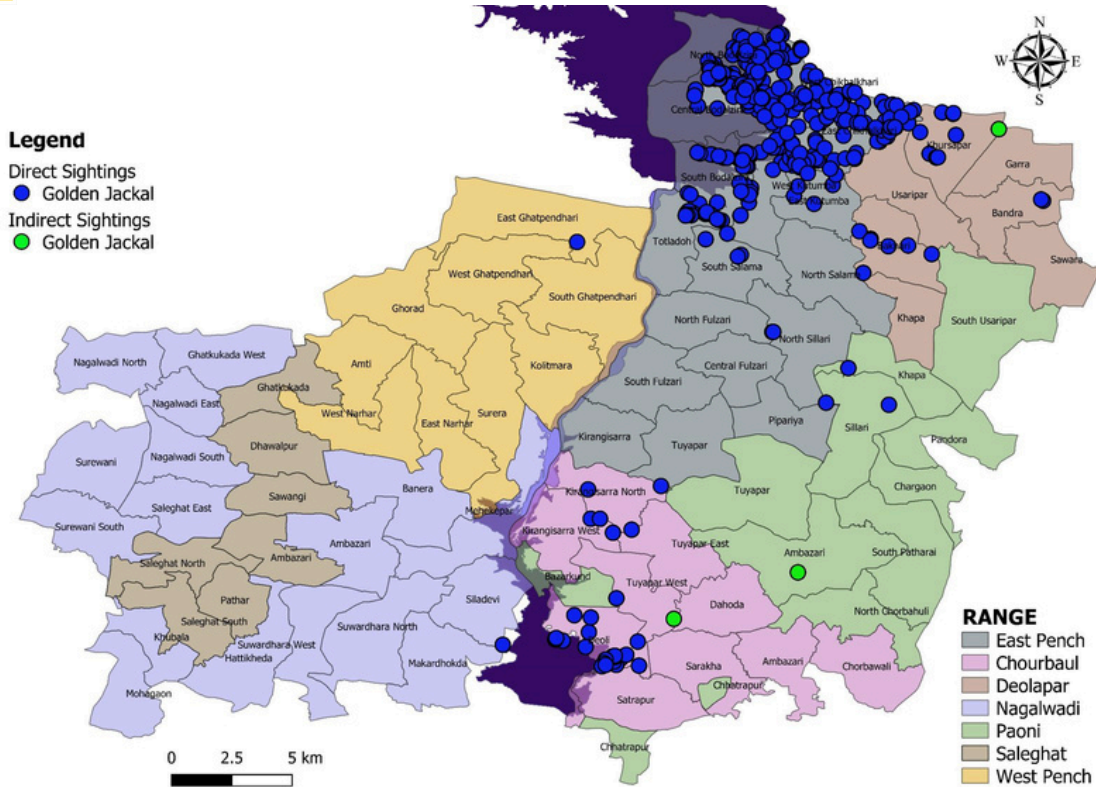




### Pench Tiger Reserve, MH. (April 2023 to March 2024) Common Grey Mongoose Direct and Indirect Sightings



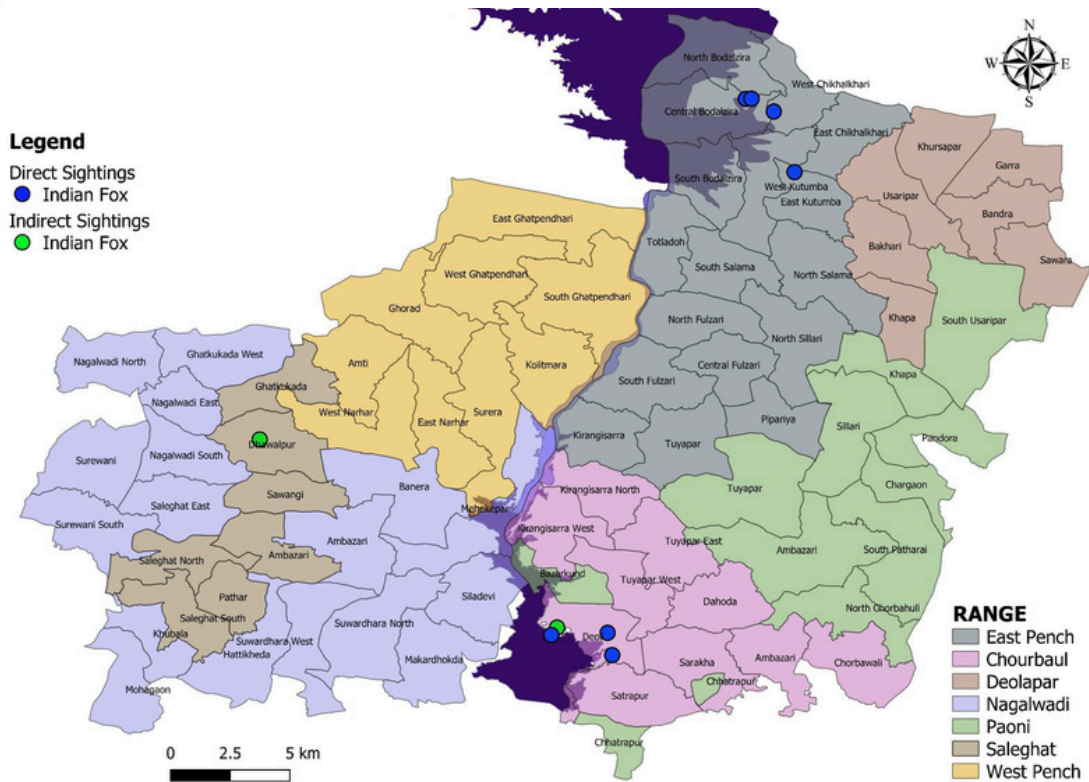
### Pench Tiger Reserve, MH. (April 2023 to March 2024) Golden Jackal Direct and Indirect Sightings



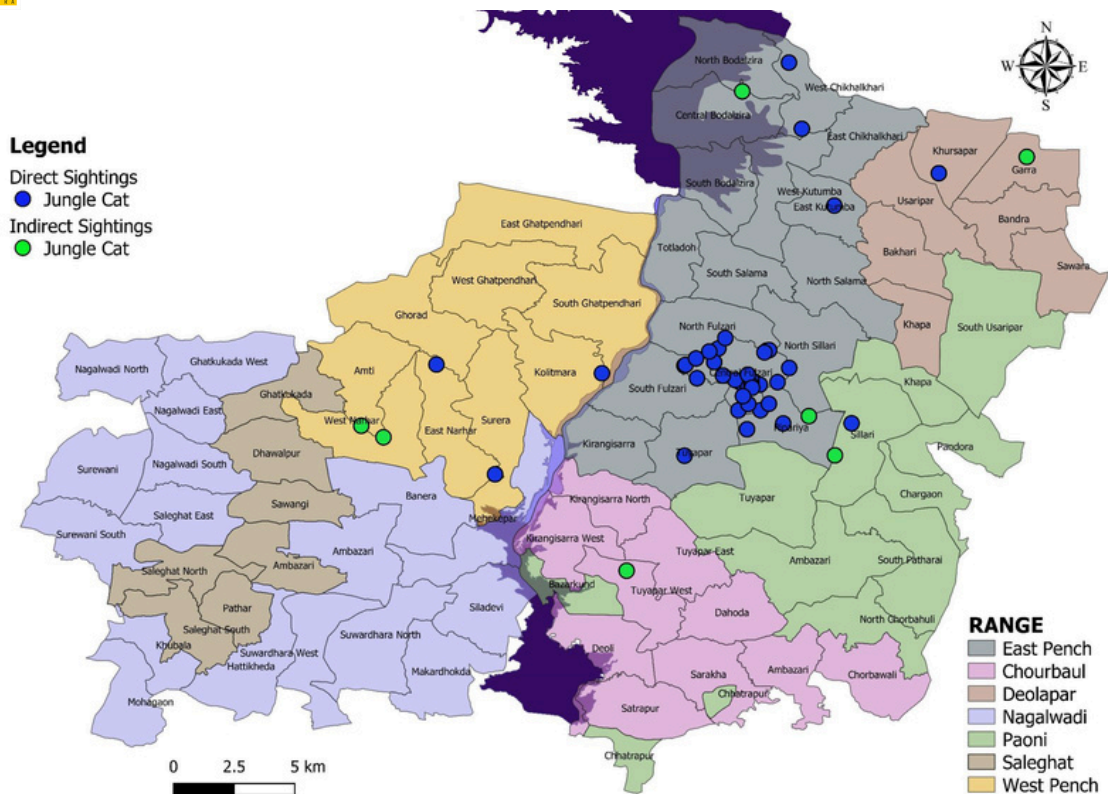




### Pench Tiger Reserve, MH. (April 2023 to March 2024) Indian Fox Direct and Indirect Sightings

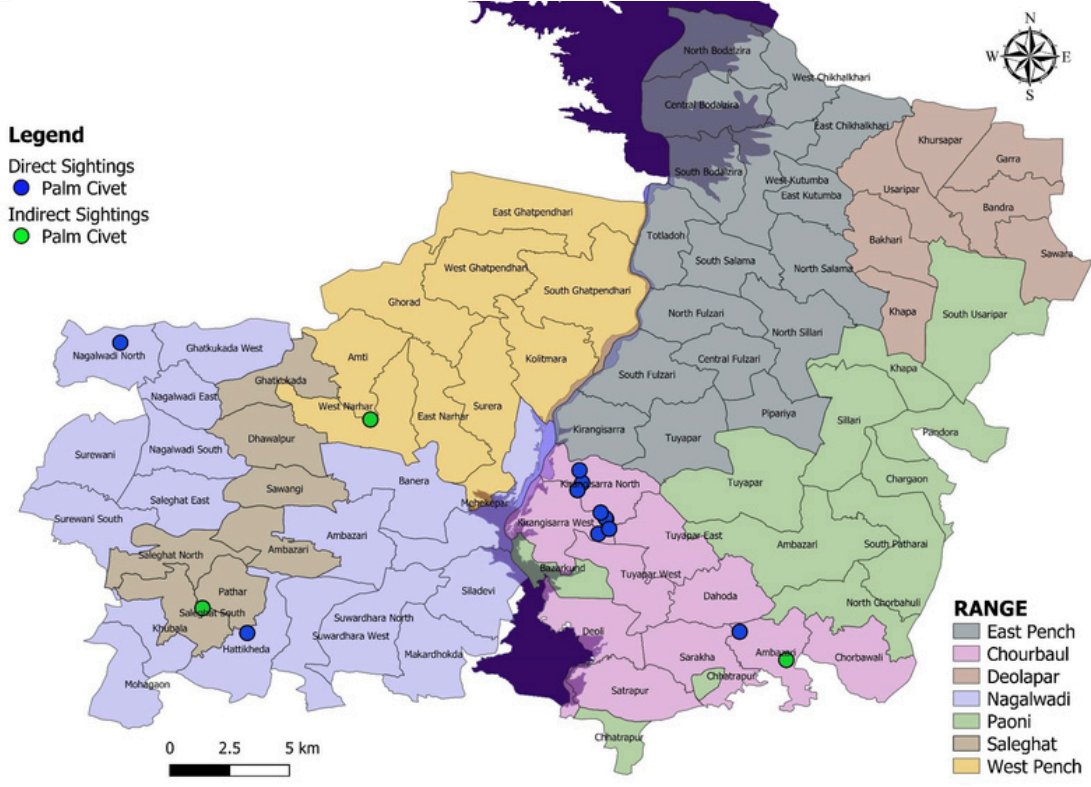


### Pench Tiger Reserve, MH. (April 2023 to March 2024) Jungle Cat Direct and Indirect Sightings

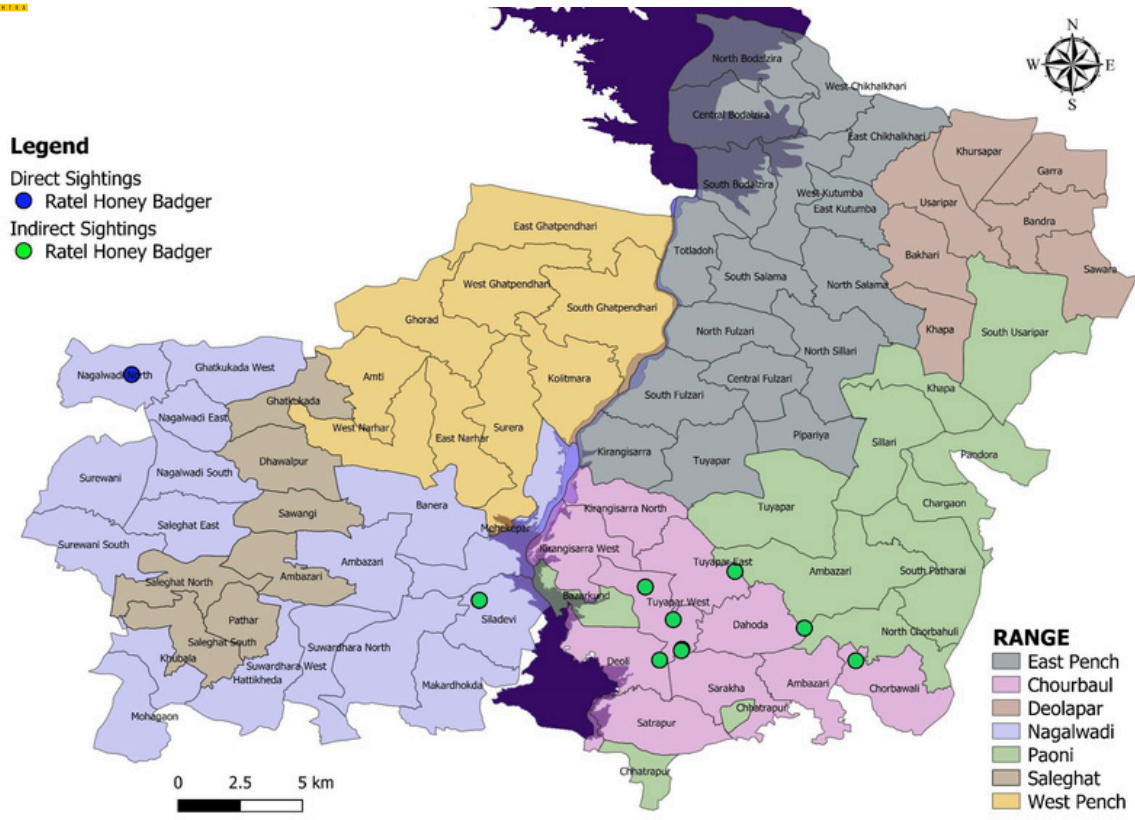




### Pench Tiger Reserve, MH. (April 2023 to March 2024) Palm Civet Direct and Indirect Sightings



### Pench Tiger Reserve, MH. (April 2023 to March 2024) Ratel Honey Badger Direct and Indirect Sightings

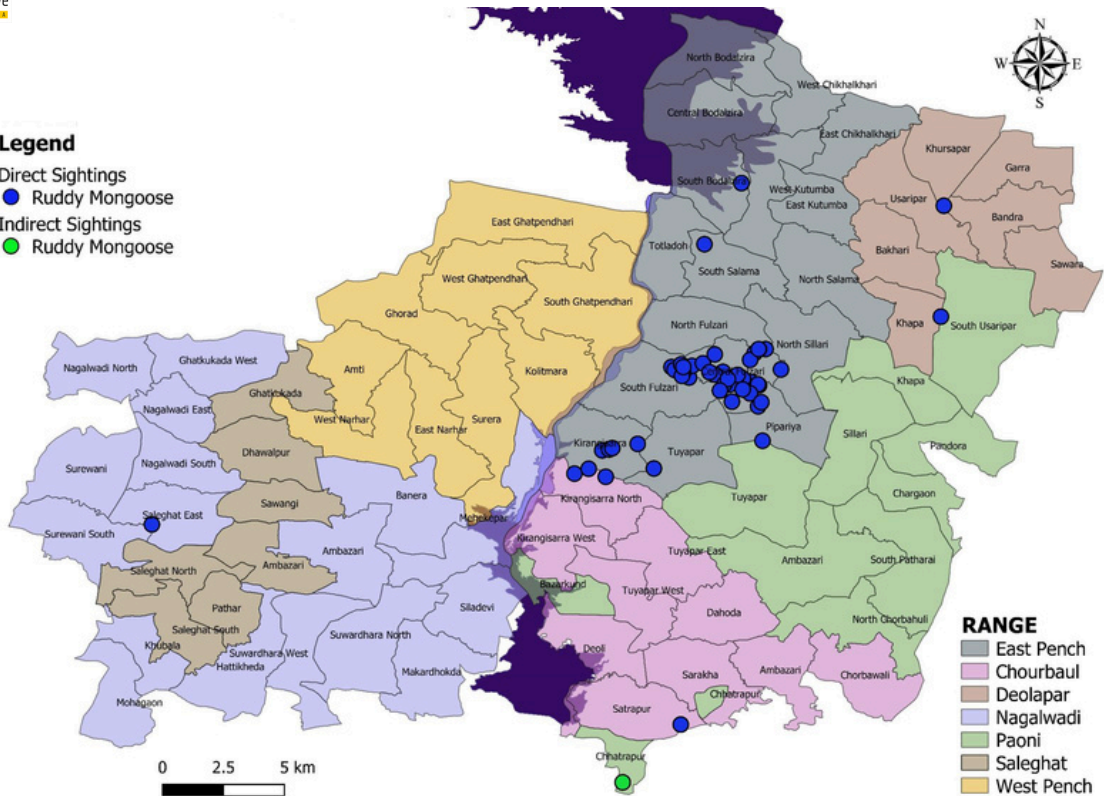




### Pench Tiger Reserve, MH. (April 2023 to March 2024) Ruddy Mongoose Direct and Indirect Sightings

#### Legend

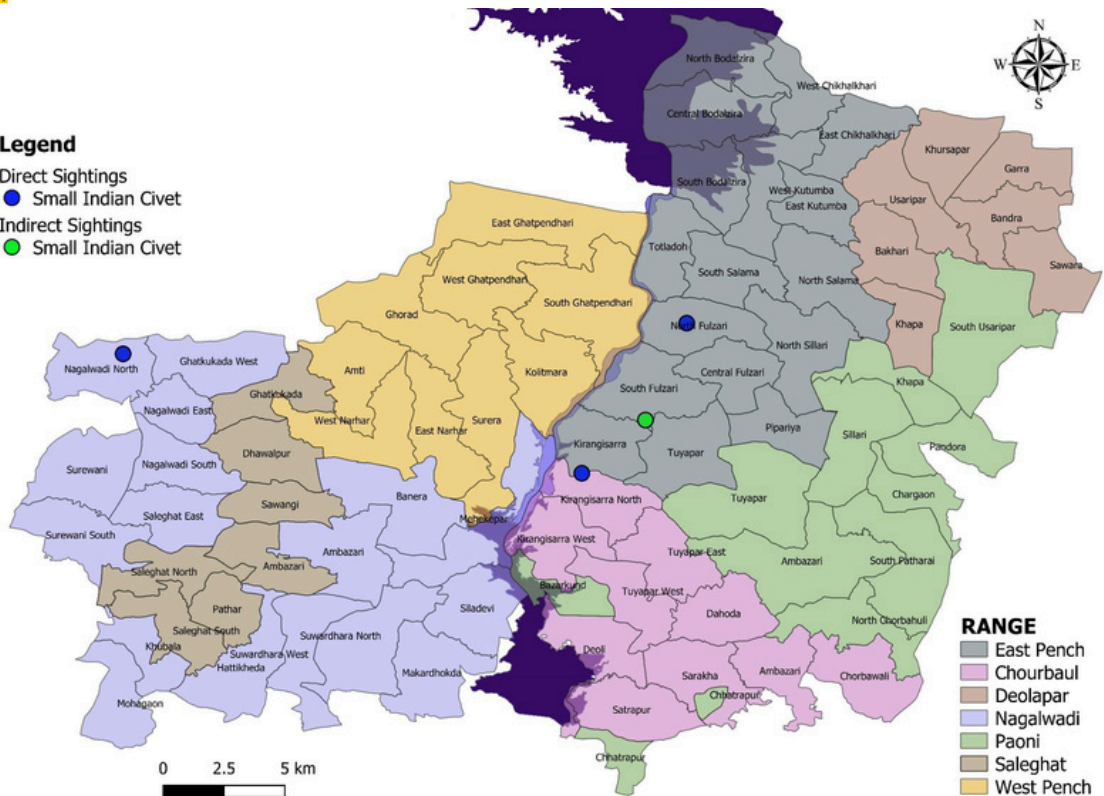
- Direct Sightings
- Ruddy Mongoose
- Indirect Sightings
- Ruddy Mongoose



### Pench Tiger Reserve, MH. (April 2023 to March 2024) Small Indian Civet Direct and Indirect Sightings

#### Legend

- Direct Sightings
- Small Indian Civet
- Indirect Sightings
- Small Indian Civet



## Herbivore Animals Map

### Pench Tiger Reserve, MH. Herbivore Direct Sighting Record (April 2023 To March 2024)

Row Labels	Chorbahuli	Deolapar	East Pench	Nagalwadi	Out of Range Boundary	Paoni	Saleghat	West Pench	Grand Total
Barking Deer	314	179	640	310	2	167	116	463	2191
Blackbuck	5	0	1	10	0	10	0	2	28
Chinkara India Gazelle	21	44	148	33	0	11	1	62	320
Chital/Spotted Deer	18434	12820	47673	2903	0	2243	335	1881	86289
Four Horned Antelope Chowsingha	41	37	99	10	0	13	0	12	212
Gaur	1996	1242	3074	800	1	315	335	2012	9775
Mouse Deer	56	7	57	13	0	14	4	22	173
Nilgai	1670	1655	2492	943	0	477	286	538	8061
Porcupine	3	1	4	10	0	-	0	5	23
Sambar	2584	1685	8584	588	5	412	201	1172	15231
Wild pig	4251	2122	9467	1829	5	1113	636	2480	21503
<b>Grand Total</b>	<b>29375</b>	<b>19792</b>	<b>72239</b>	<b>7449</b>	<b>13</b>	<b>4775</b>	<b>1914</b>	<b>8649</b>	<b>143806</b>

**Total Herbivore Direct Sighting Record : 143806**

**Range with Highest Herbivore Direct Sighting Record : East Pench - 72239**

**Range with Lowest Herbivore Direct Sighting Record : Saleghat - 1914**

### Pench Tiger Reserve, MH. Herbivore Indirect Sighting Record (April 2023 To March 2024)

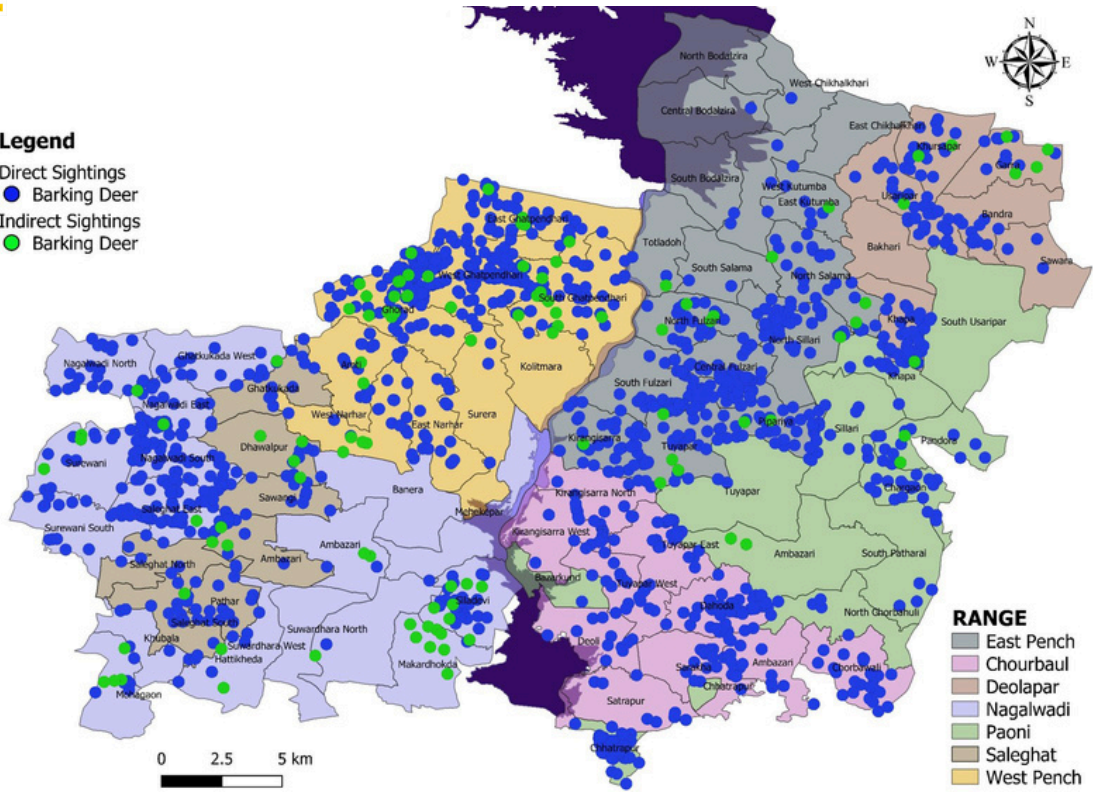
Row Labels	Antler Rubbing	Digging	Kill	Pugmark Track	Rolling	Scat Pellets Dung	Scrape	Vocalization	Grand Total
Barking Deer	0	0	0	9	1	104	0	3	117
Blackbuck	0	0	0	0	0	2	0	0	2
Chinkara India Gazelle	0	0	0	1	0	2	0	0	3
Chital/Spotted Deer	31	2	35	275	3	249	8	45	648
Four Horned Antelope Chowsingha	0	0	0	0	0	2	0	0	2
Gaur	3	2	2	317	9	330	1	4	668
Mouse Deer	0	0	0	1	0	0	0	1	2
Nilgai	1	1	1	68	6	443	0	5	525
Porcupine	0	21	0	13	0	9	3	0	46
Sambar	47	3	12	297	16	425	6	29	835
Wild pig	0	46	1	79	38	16	52	2	234
<b>Grand Total</b>	<b>82</b>	<b>75</b>	<b>51</b>	<b>1060</b>	<b>73</b>	<b>1582</b>	<b>70</b>	<b>89</b>	<b>3082</b>



### Pench Tiger Reserve, MH. (April 2023 to March 2024) Barking Deer Direct and Indirect Sightings

#### Legend

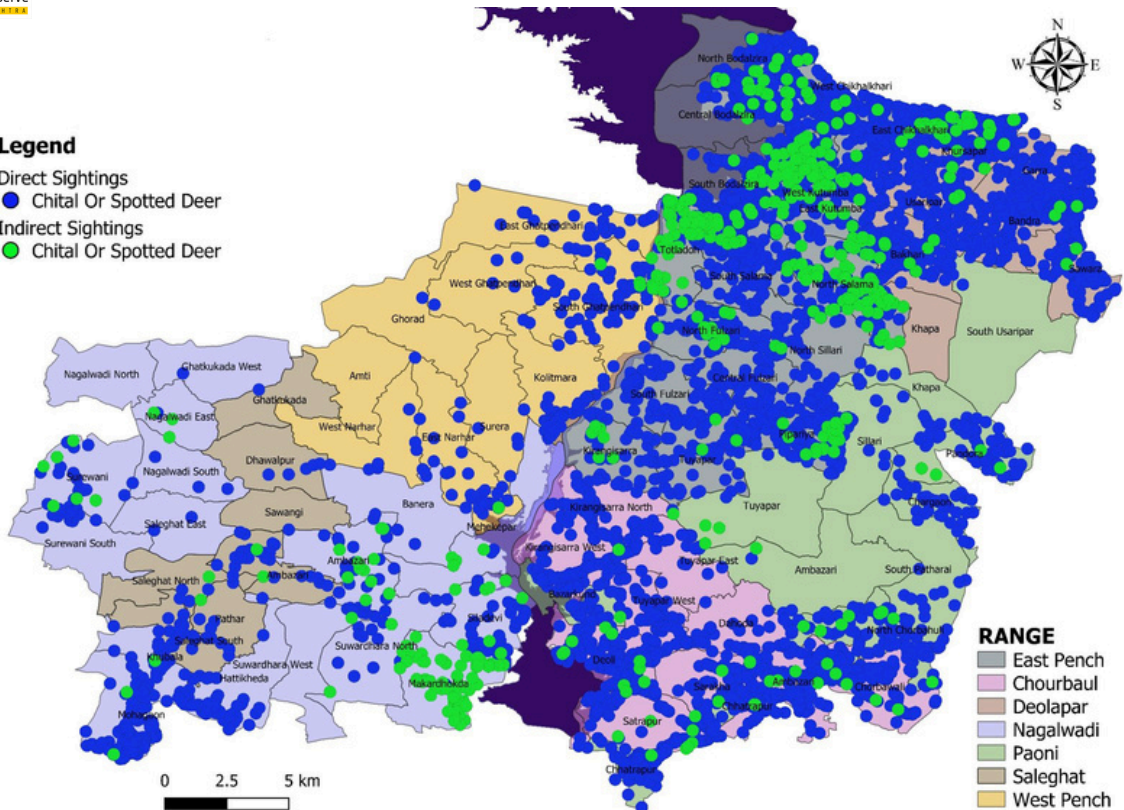
- Direct Sightings
- Barking Deer
- Indirect Sightings
- Barking Deer



### Pench Tiger Reserve, MH. (April 2023 to March 2024) Chital/ Spotted Direct and Indirect Sightings

#### Legend

- Direct Sightings
- Chital Or Spotted Deer
- Indirect Sightings
- Chital Or Spotted Deer

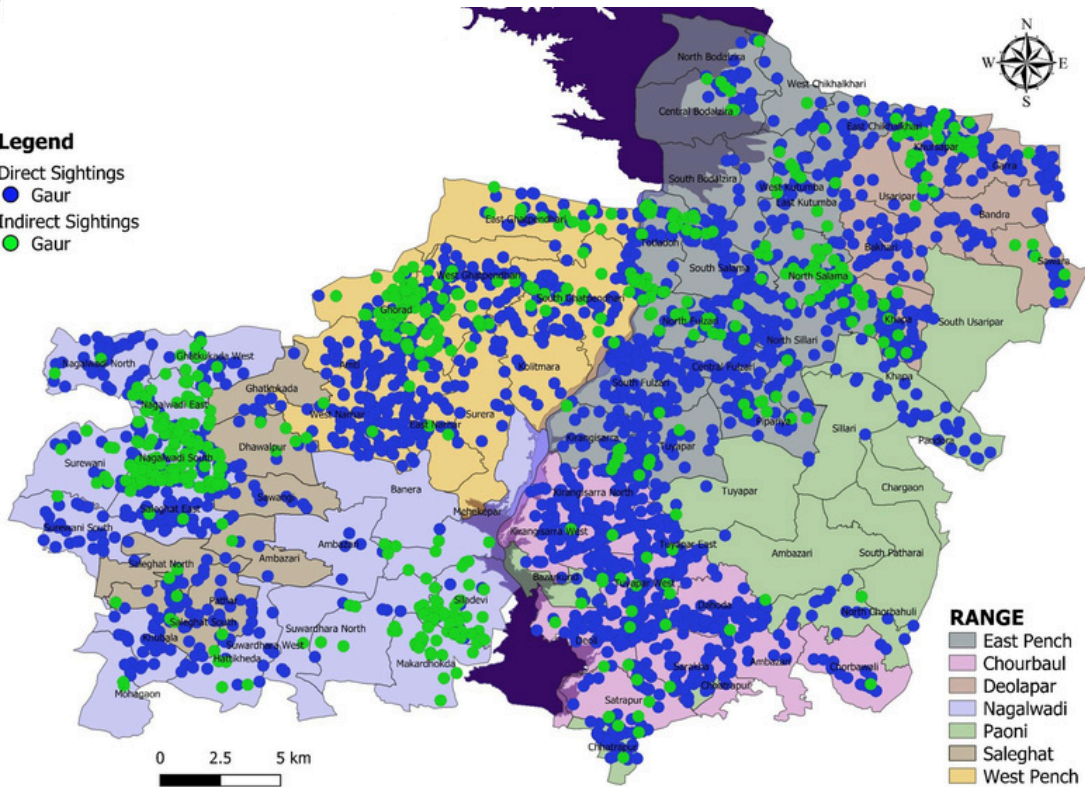




### Pench Tiger Reserve, MH. (April 2023 to March 2024) Gaur Direct and Indirect Sightings

#### Legend

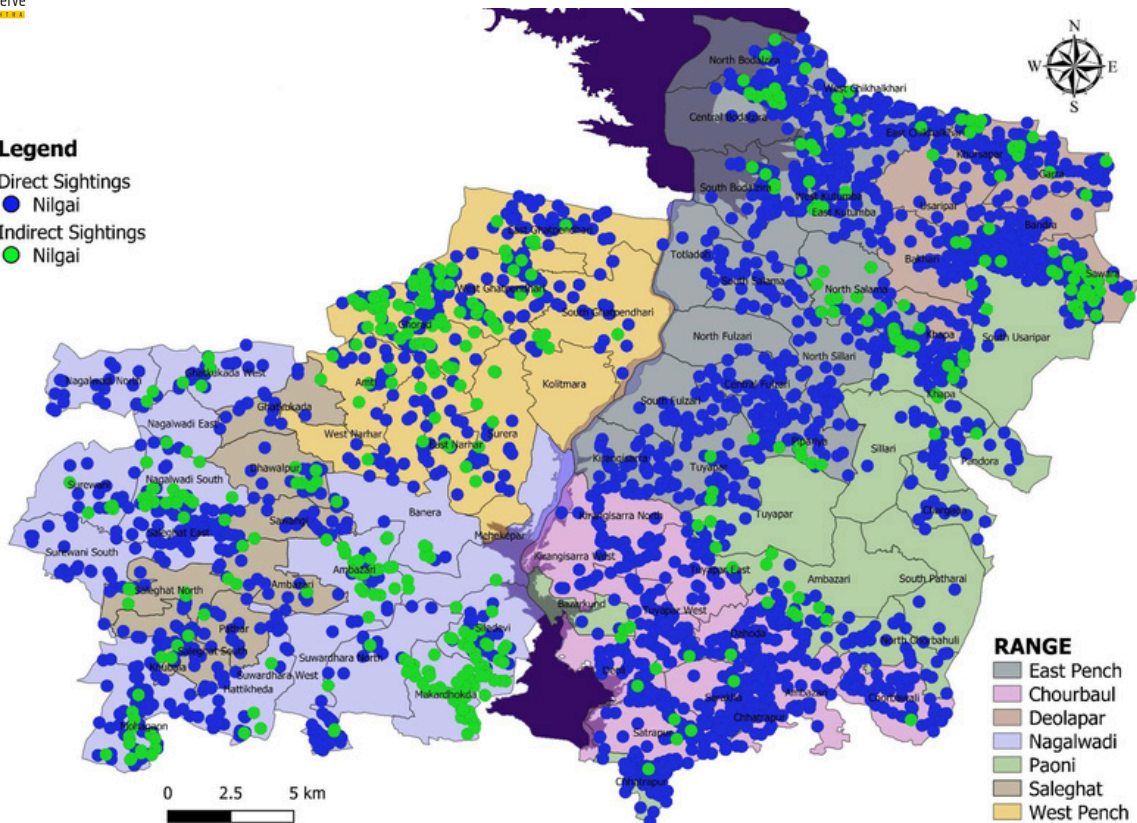
- Direct Sightings
- Gaur
- Indirect Sightings
- Gaur



### Pench Tiger Reserve, MH. (April 2023 to March 2024) Nilgai Direct and Indirect Sightings

#### Legend

- Direct Sightings
- Nilgai
- Indirect Sightings
- Nilgai

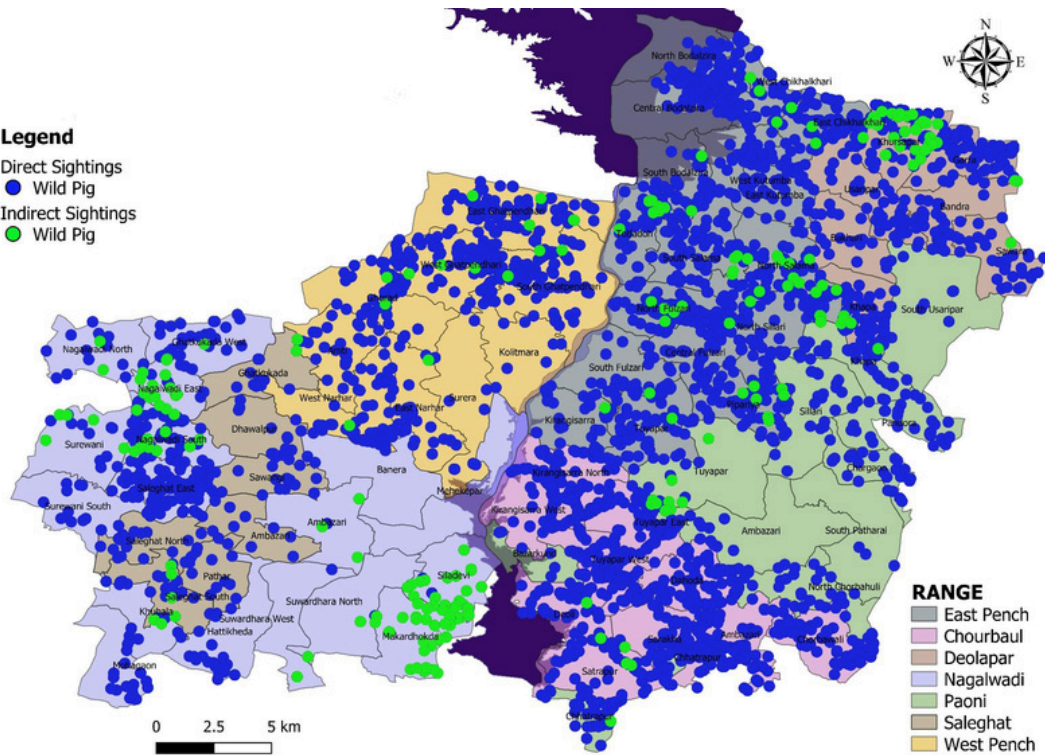




### Pench Tiger Reserve, MH. (April 2023 to March 2024) Wild Pig Direct and Indirect Sightings

#### Legend

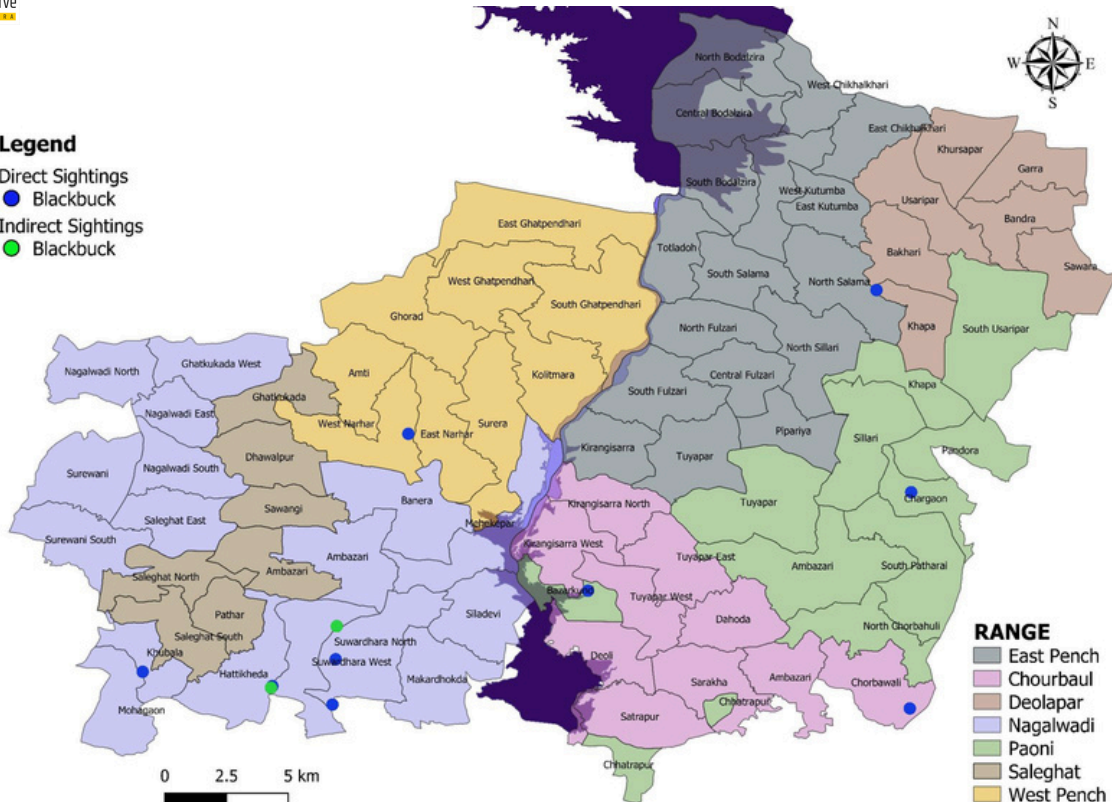
- Direct Sightings
- Wild Pig
- Indirect Sightings
- Wild Pig



### Pench Tiger Reserve, MH. (April 2023 to March 2024) Blackbuck and Indirect Sightings

#### Legend

- Direct Sightings
- Blackbuck
- Indirect Sightings
- Blackbuck

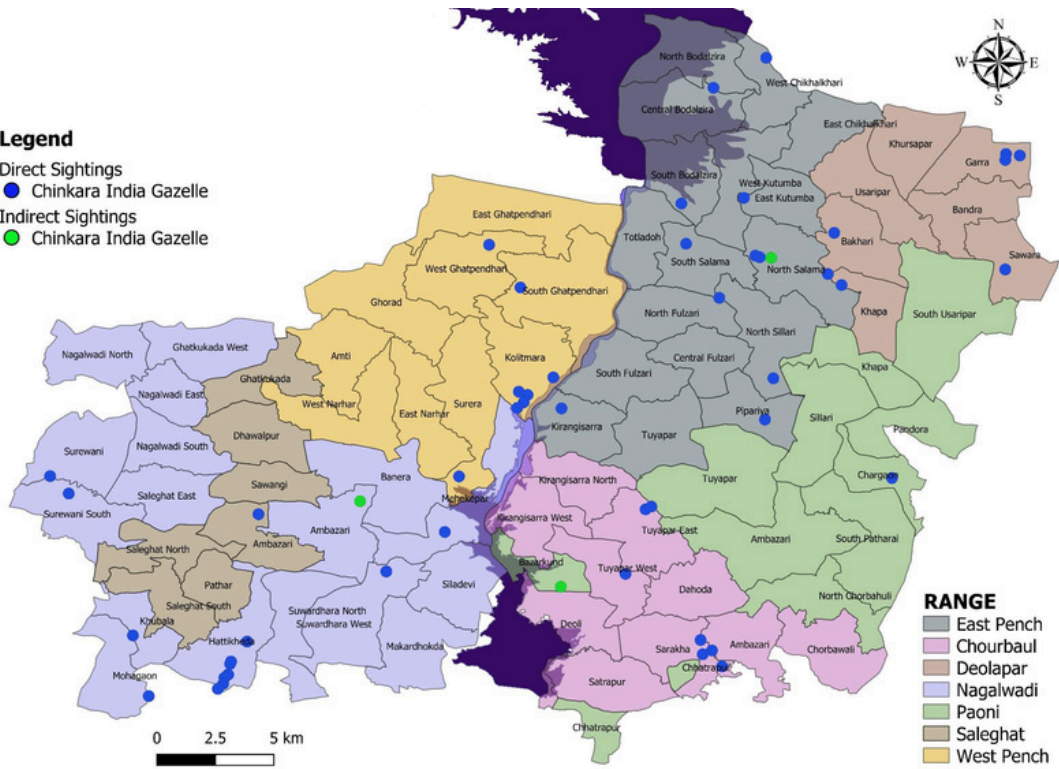




### Pench Tiger Reserve, MH. (April 2023 to March 2024) Chinkara Direct and Indirect Sightings

#### Legend

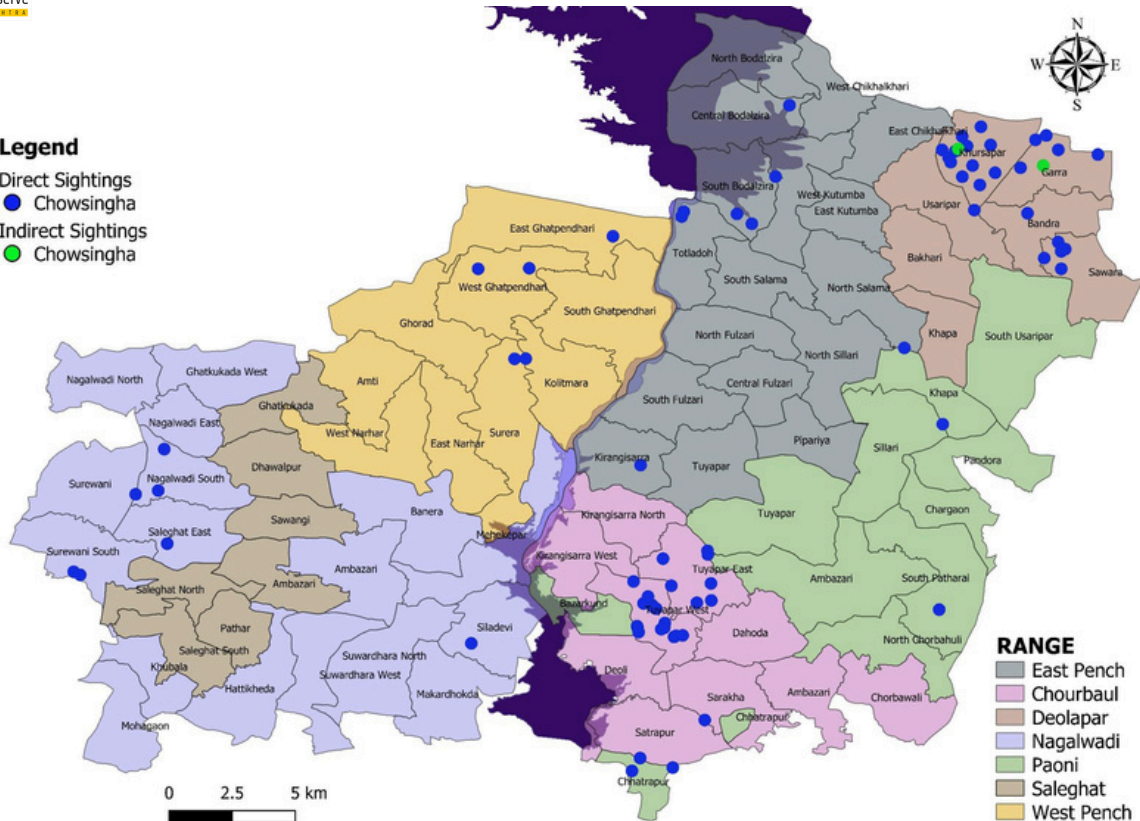
- Direct Sightings
- Chinkara India Gazelle
- Indirect Sightings
- Chinkara India Gazelle



### Pench Tiger Reserve, MH. (April 2023 to March 2024) Chowsingha Direct and Indirect Sightings

#### Legend

- Direct Sightings
- Chowsingha
- Indirect Sightings
- Chowsingha



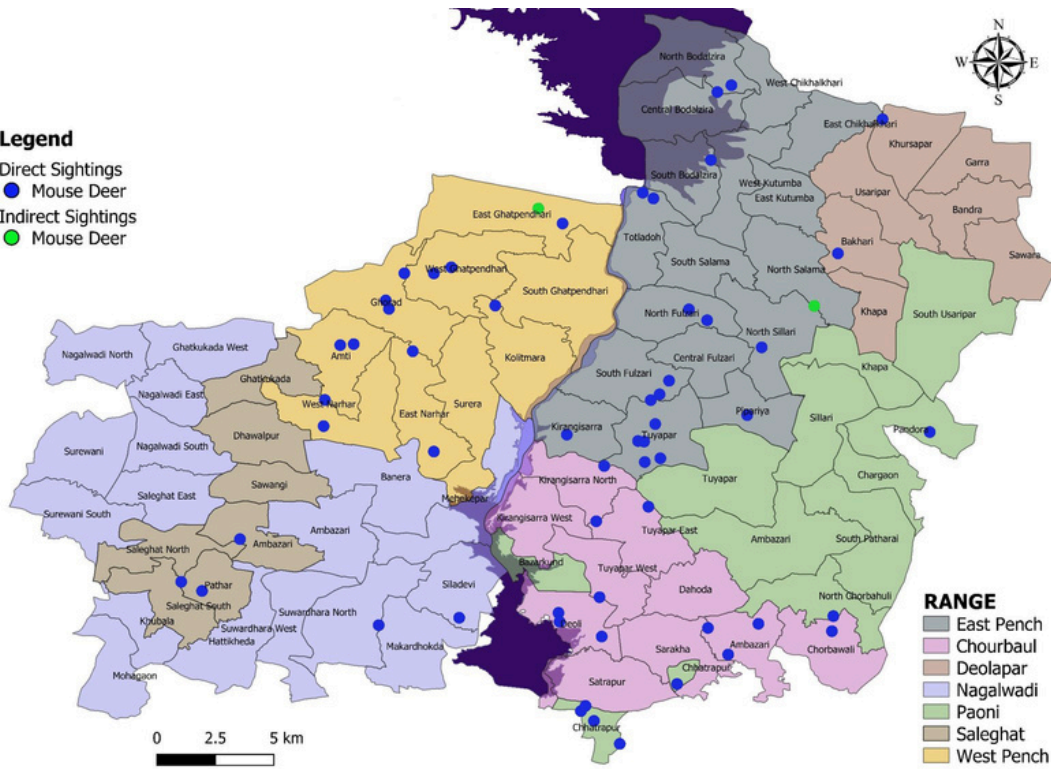




### Pench Tiger Reserve, MH. (April 2023 to March 2024) Mouse Deer Direct and Indirect Sightings

#### Legend

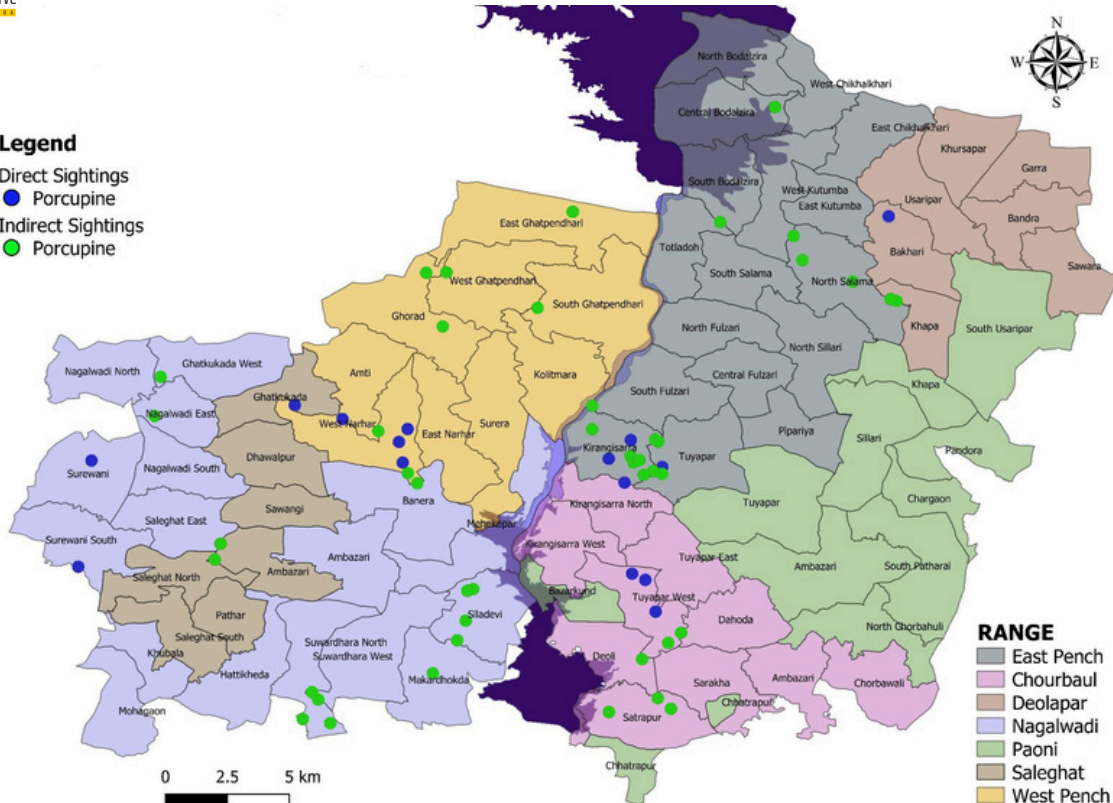
- Direct Sightings
- Mouse Deer
- Indirect Sightings
- Mouse Deer



### Pench Tiger Reserve, MH. (April 2023 to March 2024) Porcupine Direct and Indirect Sightings

#### Legend

- Direct Sightings
- Porcupine
- Indirect Sightings
- Porcupine



# Primate Arboreal Animals Map

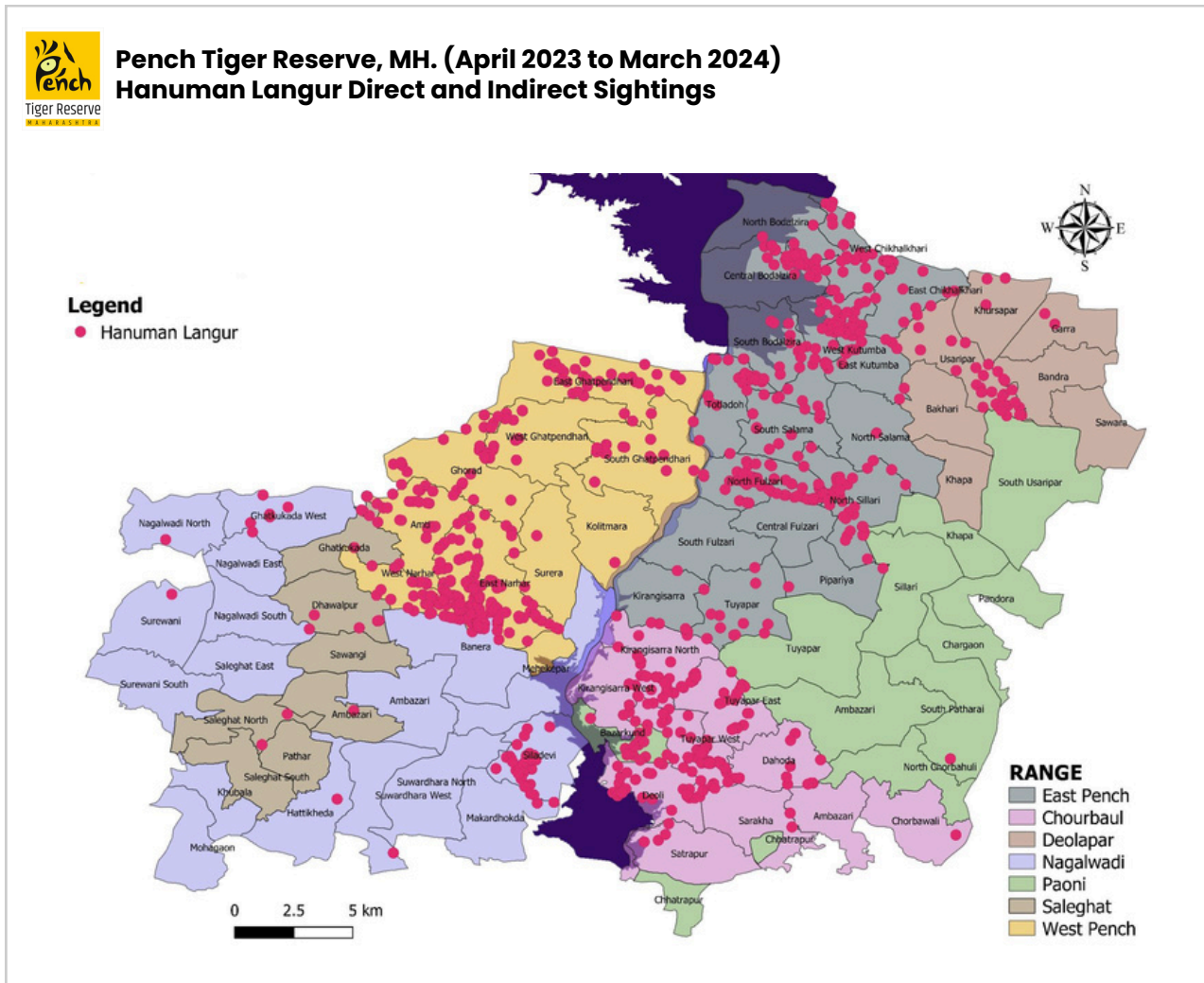
## Pench Tiger Reserve, MH. Primate Arboreal Record (April 2023 To March 2024)

Primate Arboreal								
Row Labels	Chorbahuli	Deolapar	East Pench	Nagalwadi	Paoni	Saleghat	West Pench	Grand Total
Flying Squirrel	7	1	1	0	0	0	14	23
Hanuman Langur	1739	270	5149	388	102	46	2716	10410
Others	8	2	43	125	14	0	22	214
Rhesus Macaque	888	2241	3843	344	79	55	1154	8604
Grand Total	2642	2514	9036	857	195	101	3906	19251

**Total Primate Arboreal Record : 19251**

**Range with Highest Primate Arboreal Record : East Pench - 9036**

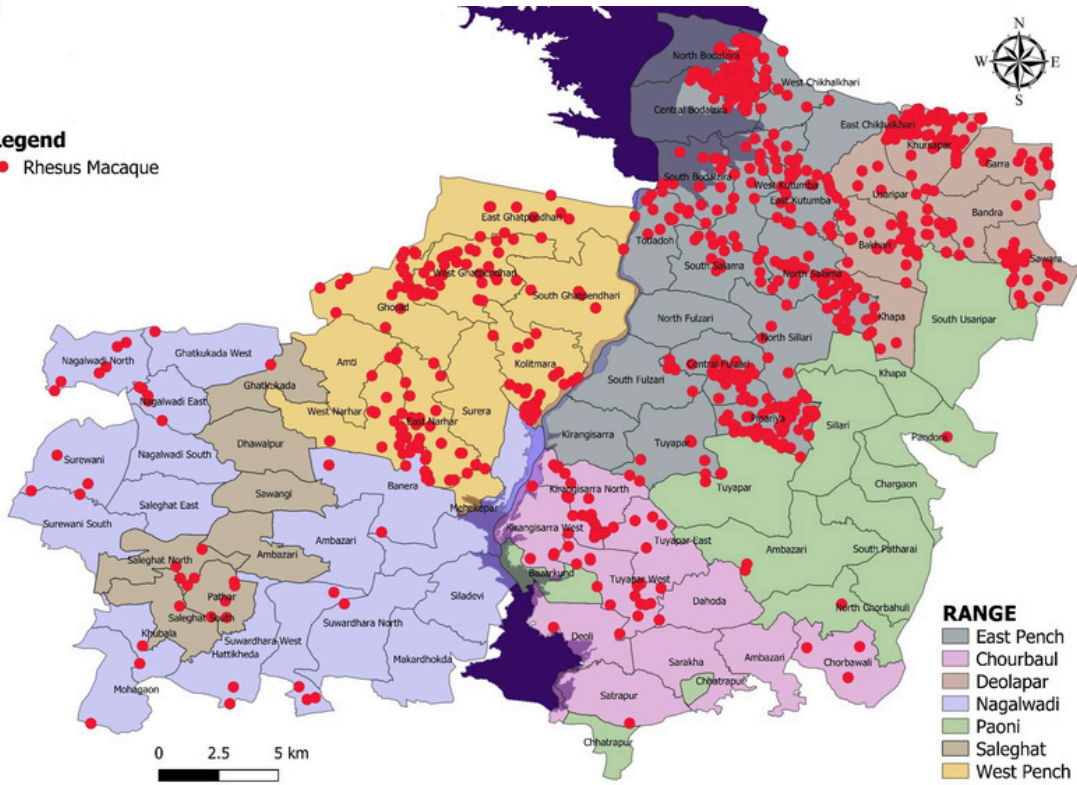
**Range with Lowest Primate Arboreal Record : Saleghat - 101**





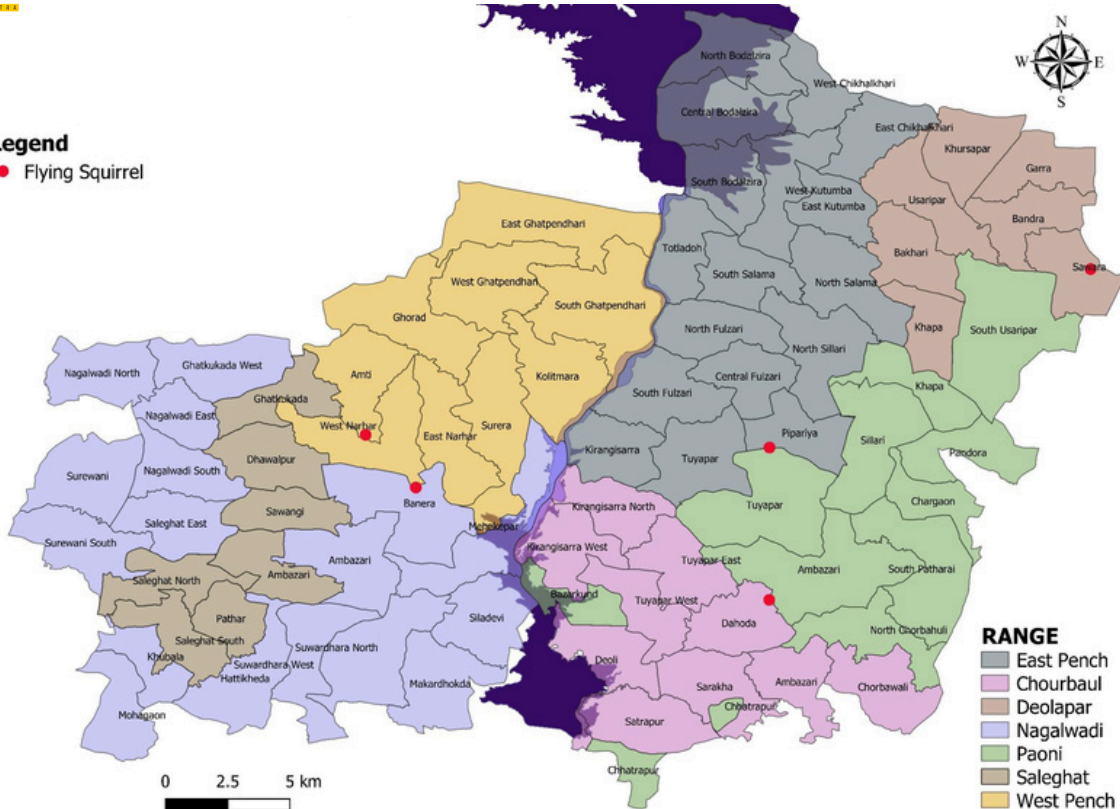
### Pench Tiger Reserve, MH. (April 2023 to March 2024) Rhesus Macaque Direct and Indirect Sightings

**Legend**  
● Rhesus Macaque



### Pench Tiger Reserve, MH. (April 2023 to March 2024) Flying Squirrel Direct and Indirect Sightings

**Legend**  
● Flying Squirrel



# Reptile Animals Map

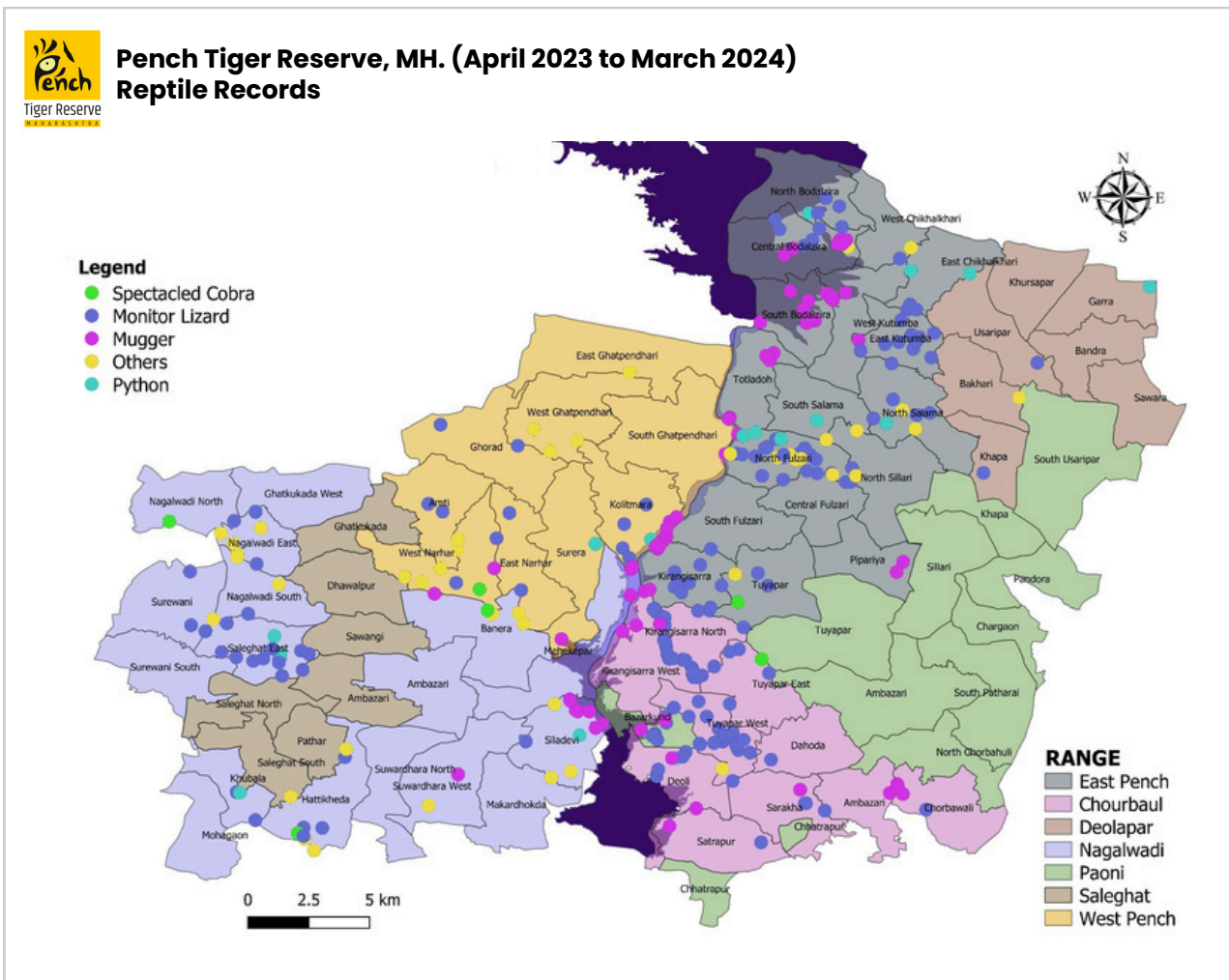
## Pench Tiger Reserve, MH. Reptile Record (April 2023 To March 2024)

Row Labels	Chorbahuli	Deolapar	East Pench	Nagalwadi	Paoni	Saleghat	West Pench	Grand Total
Monitor Lizard	65	2	67	26	7	2	15	184
Mugger	20	0	78	8	2	0	8	116
Others	0	1	15	16	0	0	15	47
Python	1	1	12	3	0	1	3	21
Spectacled Cobra	1	0	1	2	0	0	2	6
<b>Grand Total</b>	<b>87</b>	<b>4</b>	<b>173</b>	<b>55</b>	<b>9</b>	<b>3</b>	<b>43</b>	<b>374</b>

**Total Reptile Record : 374**

**Range with Highest Reptile Record : East Pench - 173**

**Range with Lowest Reptile Record : Saleghat - 3**



# Bird Map

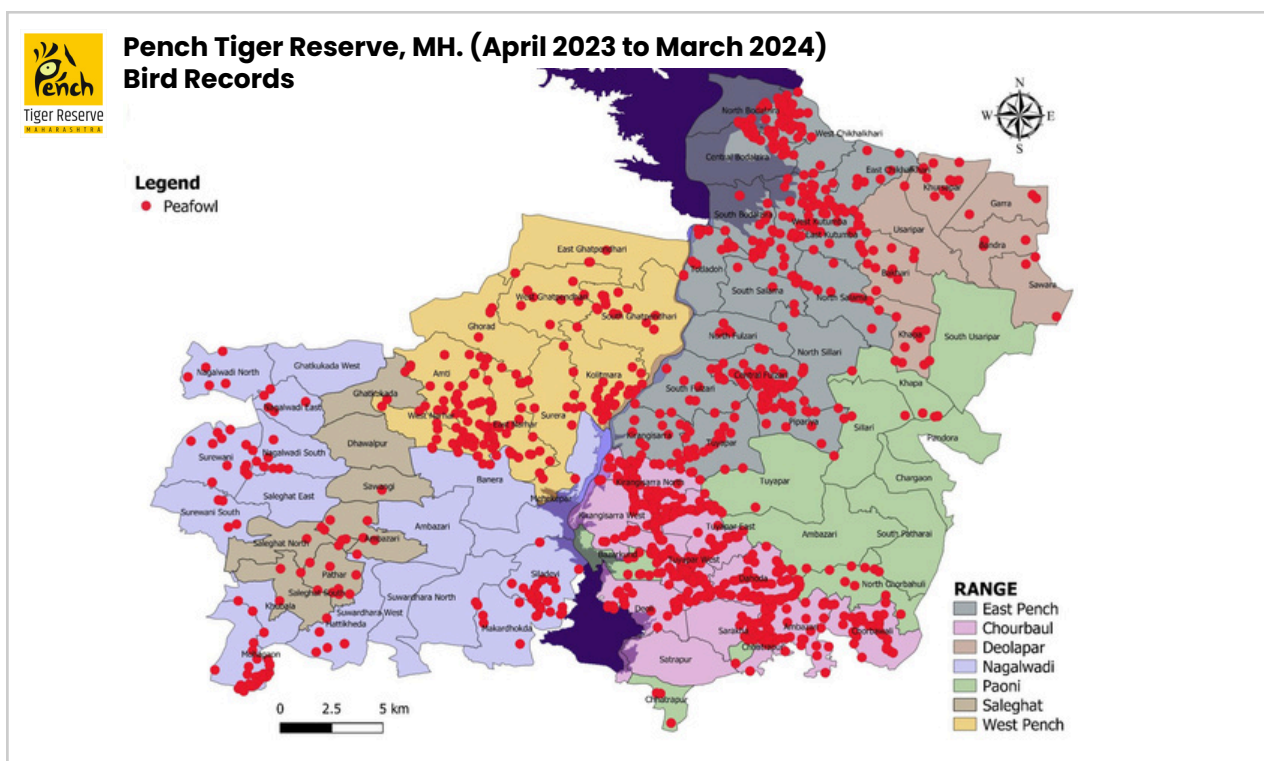
## Pench Tiger Reserve, MH. Bird Record (April 2023 To March 2024)

Row Labels	Chorbahuli	Deolapar	East Pench	Nagalwadi	Paoni	Saleghat	West Pench	Grand Total
Brown Fish Owl	0	0	0	2	0	0	1	3
Changeable Hawk-Eagle	6	3	11	21	2	5	19	67
Cinereous Vulture	2	1	4	0	0	2	0	9
Egyptian Vulture	0	-	3	0	0	1	1	5
Eurasian Eagle Owl	0	1	0	1	0	0	0	2
Forest Owlet	4	1	0	1	0	3	1	10
Great Hornbill	0	0	2	1	0	1	18	22
Great Headed Fish Eagle	7	0	0	0	0	1	1	9
Grey Junglefowl	30	7	28	1	2	2	87	157
Griffon Vulture	2	0	1	0	0	0	14	17
Indian Grey Hornbill	51	13	1	28	0	3	4	100
Lesser Fish Eagle	0	1	0	3	0	0	1	5
Malabar Grey Hornbill	0	2	4	0	0	0	7	13
Malabar Pied Hornbill	2	0	0	0	0	0	1	3
Others	18	34	16	80	0	7	37	192
Peafowl	1718	133	1165	191	56	53	343	3659
Red Headed Vulture	1	2	0	0	0	0	0	3
Red Junglefowl	34	4	92	22	2	3	76	233
White Rumped Vulture	3	0	12	0	0	0	1	16
<b>Grand Total</b>	<b>1878</b>	<b>202</b>	<b>1339</b>	<b>351</b>	<b>62</b>	<b>81</b>	<b>612</b>	<b>4525</b>

**Total Bird Record : 4525**

**Range with Highest Bird Record : Chorbahuli - 1878**

**Range with Lowest Bird Record : Paoni - 62**

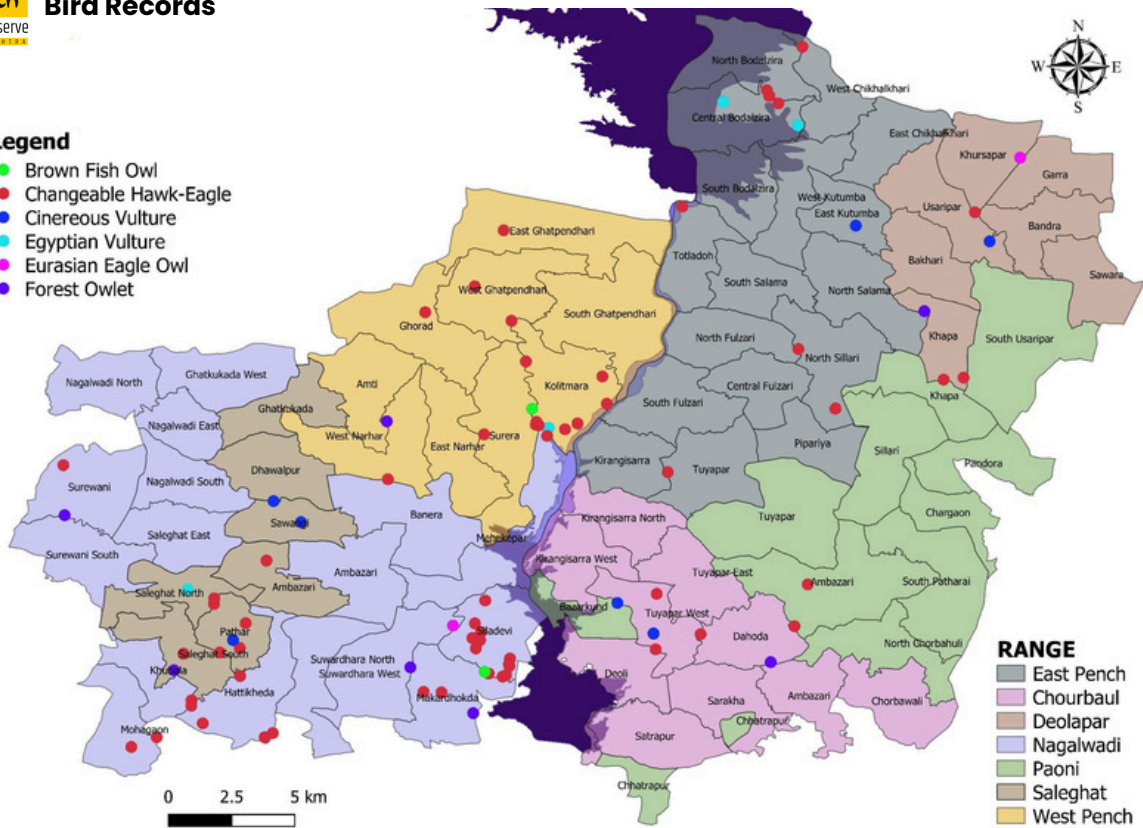




### Pench Tiger Reserve, MH. (April 2023 to March 2024) Bird Records

#### Legend

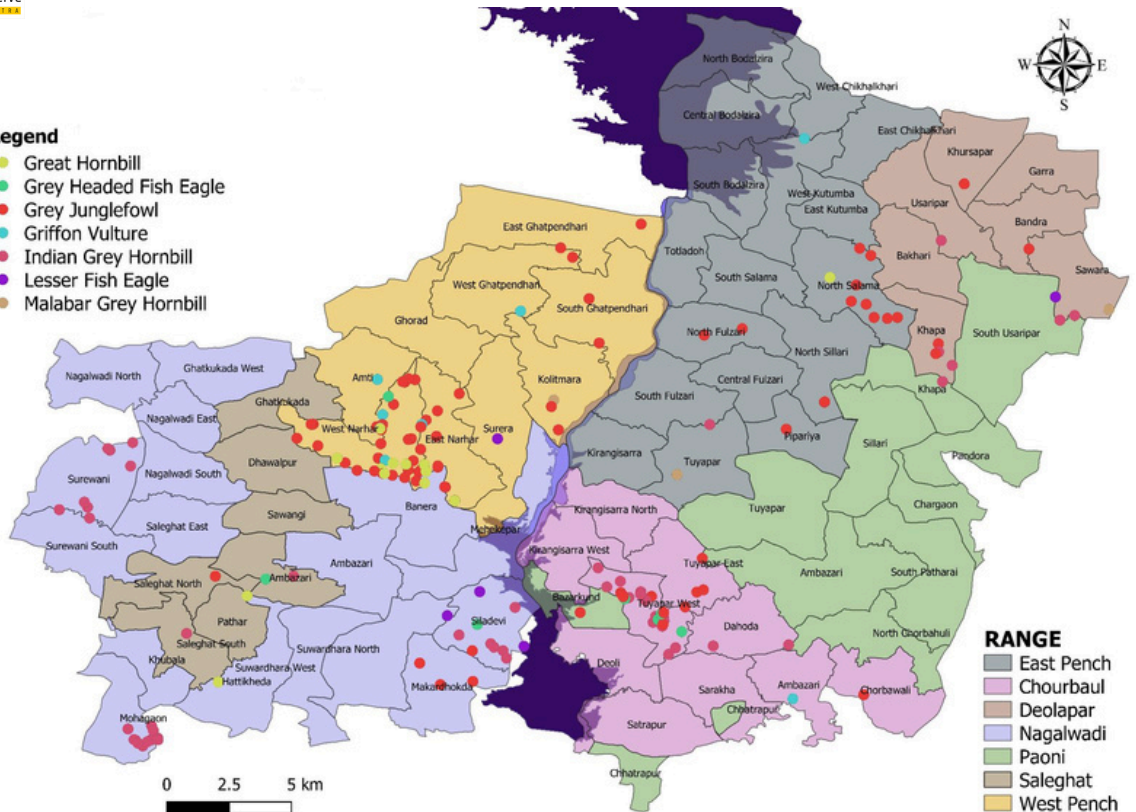
- Brown Fish Owl
- Changeable Hawk-Eagle
- Cinereous Vulture
- Egyptian Vulture
- Eurasian Eagle Owl
- Forest Owlet



### Pench Tiger Reserve, MH. (April 2023 to March 2024) Bird Records

#### Legend

- Great Hornbill
- Grey Headed Fish Eagle
- Grey Junglefowl
- Griffon Vulture
- Indian Grey Hornbill
- Lesser Fish Eagle
- Malabar Grey Hornbill

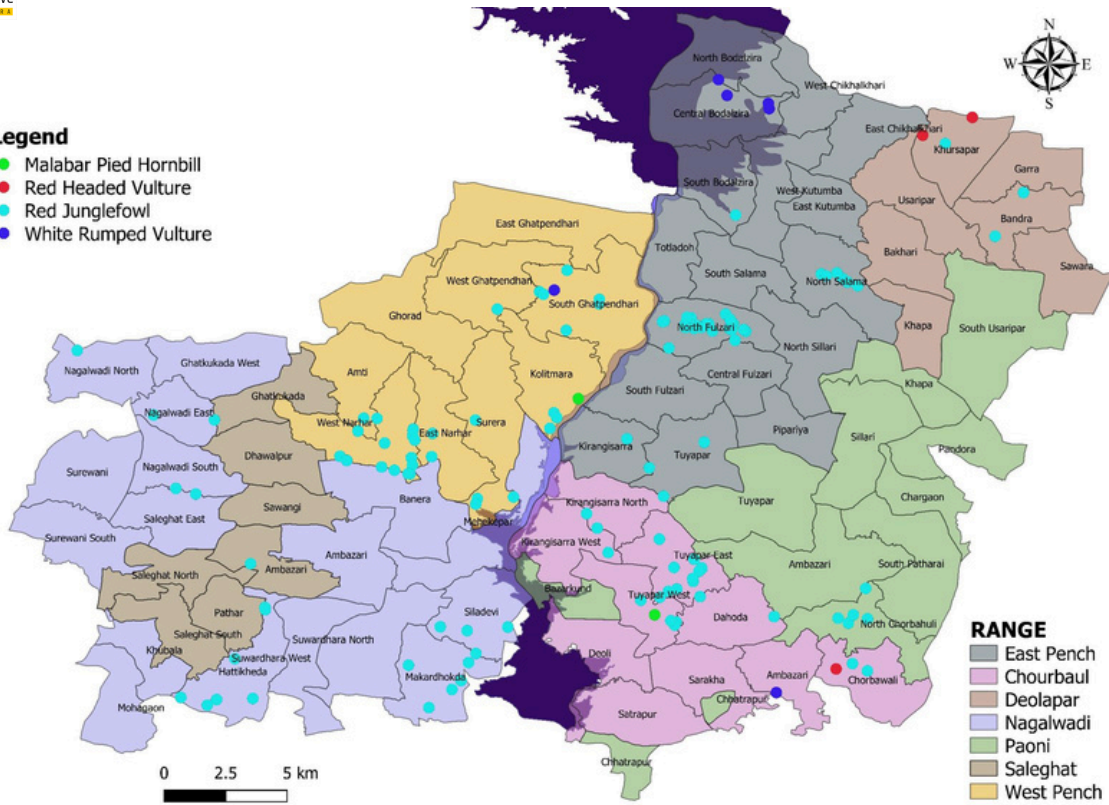




# Pench Tiger Reserve, MH. (April 2023 to March 2024) Bird Records

### Legend

- Malabar Pied Hornbill
- Red Headed Vulture
- Red Junglefowl
- White Rumped Vulture



# Letter Issued Regarding M-STrIPES Patrolling



महाराष्ट्र शासन

उपसंचालक, पेंच व्याघ्र प्रकल्प, नागपूर यांचे कार्यालय

पहिला माळा, एफ.डी.सी.एम. भवन, ३५९/बी, हिंगणा रोड, अंबाझरी, नागपूर - ४४० ०३६

दुरध्वनी क्र. ०७१२ - २८११२२१ Email ID : dfowlpench@mahaforest.gov.in Website:- www.mahapenchtiger.com

क्रमांक : कक्ष-३/दक्षता/उपसं/पेंचव्याघ्र/ ६९५ /२०-२१

नागपूर, दिनांक २१/०६/२०२१

विषय :- M-STrIPES patrolling गस्ती मध्ये सुधारणा करण्याबाबत.

संदर्भ :- अपर प्रधान मुख्य वनसंरक्षक (वन्यजीव) पुर्व, नागपूर यांच्या अध्यक्षतेखाली दि.  
१५/०६/२०२१ रोजीच्या सभेतील सुचना

विषयाकित प्रकरणी संदर्भिय विषयांच्या अनुषंगाने वनपरिक्षेत्र अधिकारी यांना (सर्व) कळविण्यात येत आहे की, M-STrIPES patrolling गस्तीमध्ये खालील प्रमाणे सुधारणा करण्याबाबत निर्देश देण्यात येत आहे.

१. M-STrIPES patrolling गस्ती करतेवेळी कमीत कमी ४ फोटो upload करणे बंधनकारक राहिल. जसे की, १) Starting Point, २) Last Point from where returning ३) Finish Point ४) Near Last Point.
२. वनरक्षक-५० कि.मी, वनपाल-२५, वनपरिक्षेत्र अधिकारी -१० या प्रमाणे आठवडयाला गस्त करतील व तसा अहवाल M-STrIPES बाबत सादर करतील.
३. गस्तीदरम्यान निदर्शनास आलेले अवैध निरीक्षणाच्या नोंदी/वनगुन्ह्यांची नोंद सुध्दा M-STrIPES चा अहवाल नमुद असणे आवश्यक आहे. करीता आपल्या स्तरावर वनरक्षक, वनपाल यांना सुचना देण्यात यावे.
४. वाघांचे दर्शन, मृत्यु, वन्यजीव गुन्हे आणि पर्यावरणीय निरीक्षणाशी संबंधित डेटा कॅप्चर करावे.
५. M-STrIPES गस्तीचा मासीक अहवाल सादर करतेवेळी वनपरिक्षेत्र अधिकारी (सर्व), वनपाल यांनी नियतक्षेत्रानुसार अहवालाची व्यक्तीशः तपासणी करूनच अहवाल त्याचा शिफारसीसह या कार्यालयास सादर करावा.
६. माहे जुलै/२०२१ चा अहवाल वरील प्रमाणे सादर करण्यात येईल याची काळजी घ्यावी.

निविष्ट

रक्षक वनपाल, वनरक्षक

प्रां. उपर देऊ

प्रती,

वनपरिक्षेत्र अधिकारी, पुर्व पेंच पिपरिया/  
पश्चिम पेंच /देवलापार(वजी)/ चोरबाहुली(वजी)/  
सालेघाट(वजी)/नागलवाडी(ए.नि.)/पवनी(ए.नि.)/ विशेष व्याघ्र संरक्षणदल,१/२/३

16/09

(डॉ. प्रभु नरथ शुक्ल)  
उपसंचालक,  
पेंच व्याघ्र प्रकल्प नागपूर

प्रतिलिपी :- सहाय्यक वनसंरक्षक अशिप्रक/ रोहया व वजी/वि.व्या.सं दल पेंच व्याघ्र प्रकल्प, नागपूर यांना माहितीस व पुढील कार्यवाहीस अग्रेषीत.

प्रतिलिपी :- डाटा इन्ट्री ऑपरेटर (M-STrIPES) यांना माहितीस व पुढील कार्यवाहीस रवाना. यांना वरील प्रमाणे दिलेल्या निर्देशनास कार्यवाही करून वनपरिक्षेत्र अधिकारी यांना प्रत्येक महिन्याचा Data collection संबंधित वनपरिक्षेत्र अधिकारी यांच्या कडे सादर करावा.







**PENCH TIGER RESERVE,  
MAHARASHTRA**

# **M-STrIPES**

## **Implementation Annual Report**

**(April 2023 To March 2024)**

**Visit : [www.penchtigerreserve.maharashtra.gov.in](http://www.penchtigerreserve.maharashtra.gov.in)  
or scan**

